

# Recent High End Events in Triadelphia, WV and Pittsburgh, PA

**Fred McMullen | [fred.mcmullen@noaa.gov](mailto:fred.mcmullen@noaa.gov)**

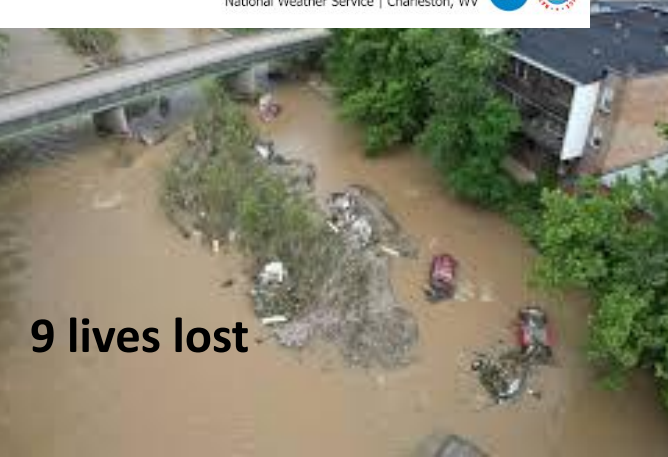
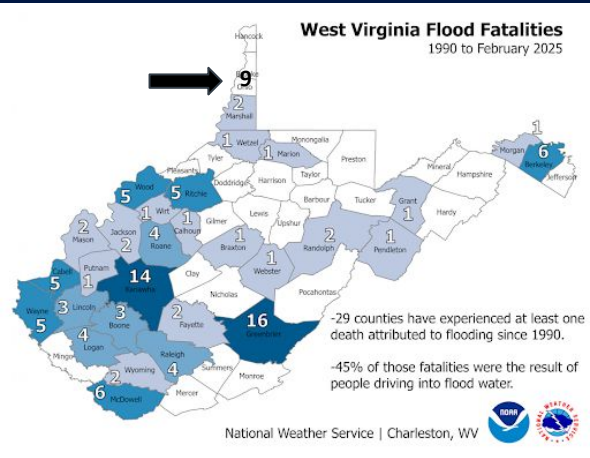
**Warning Coordination Meteorologist**

National Weather Service Pittsburgh PA  
National Oceanic and Atmospheric Administration  
U.S. Department of Commerce

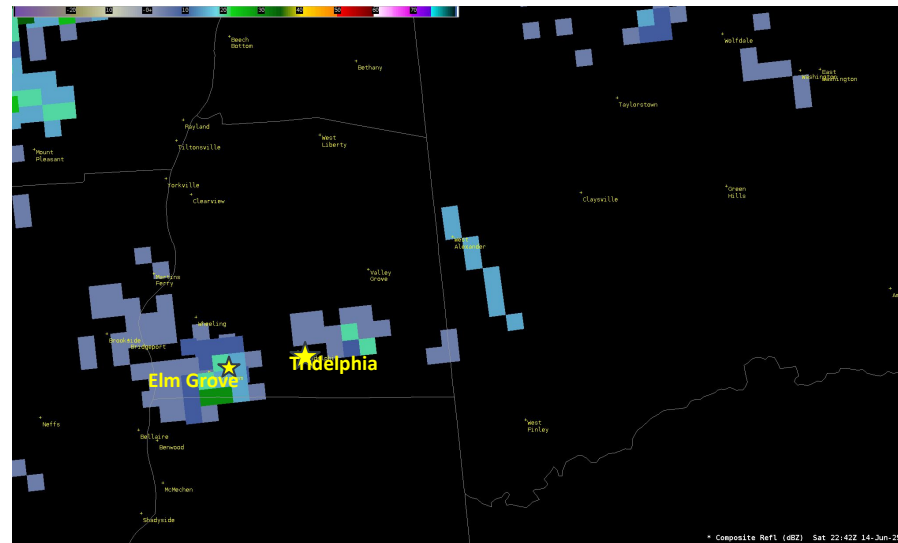


# Ohio County Flash Flood June 14 2025

## Nine People Swept Away



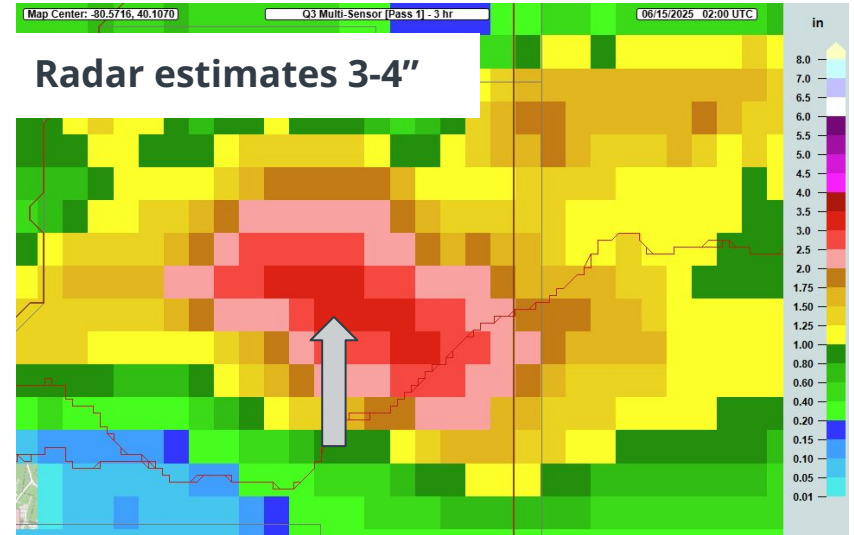
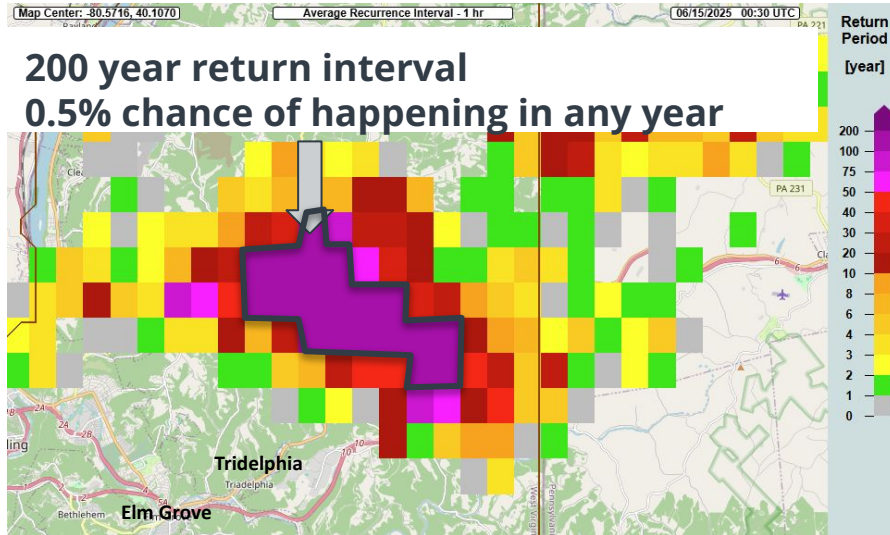
# Triadelphia Flash Flood



## Preliminary Damage Assessment:



# Ohio County 6/14/25



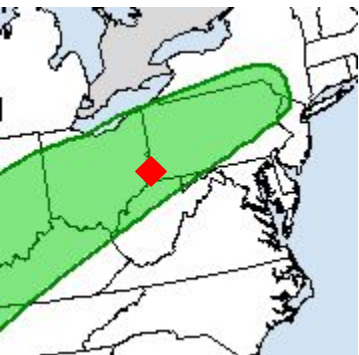
- Note the heaviest rain fell upstream where the fatalities where

# WPC Excessive Rainfall Outlooks

Valid time ending at 12Z June 15, 2025

Day 5

Issued 1933Z Tue Jun 10



Day 4

Issued 1857Z Wed Jun 11



Day 3

Issued 1949Z Thu Jun 12



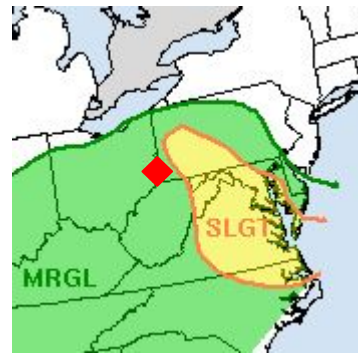
Day 2

Issued 1947Z Fri Jun 13



Day 1

Issued 1529Z Sat Jun 14



This was a marginal, highly-localized, and low-probability but high-impact event.



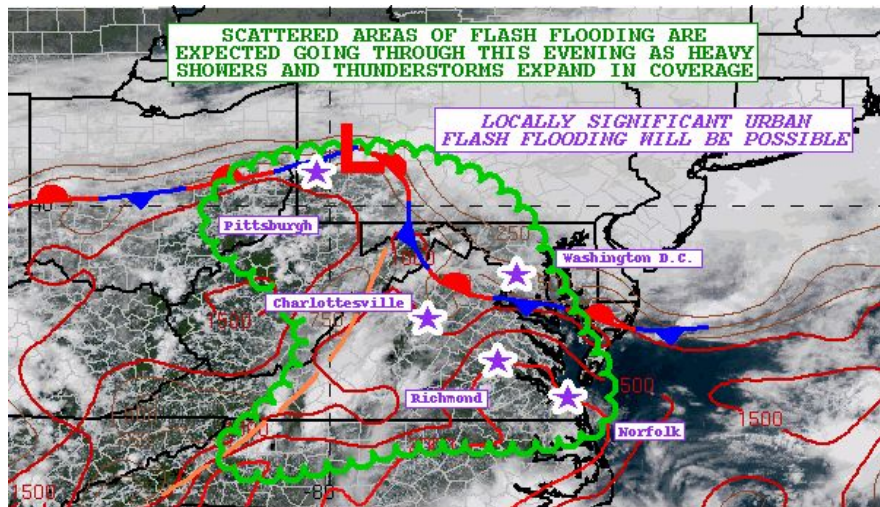
WEATHER PREDICTION CENTER  
NATIONAL OCEANIC AND ATMOSPHERIC ADMINISTRATION

# WPC Mesoscale Precipitation Discussions

Lead time of ~4 hours

## MPD #0435

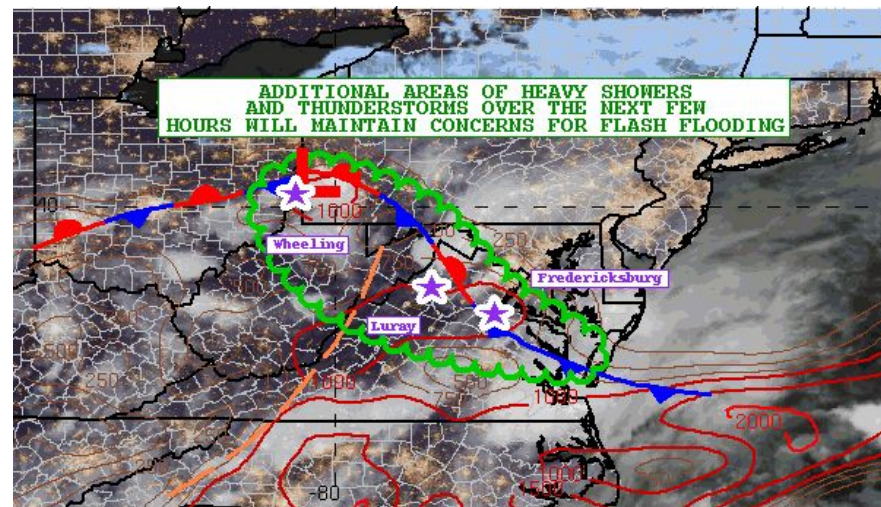
Issued 1940Z Sat Jun 14



250614/1910 GOES19 RGB GEOCOLOR  
RAP32 ML CAPE (lowest 90MB) j/kg 250614/1800f002  
WPC MPD #0435

## MPD #0438

Issued 0132Z Sun Jun 15



250615/0100 GOES19 RGB GEOCOLOR  
RAP32 ML CAPE (lowest 90MB) j/kg 250615/0000f001  
WPC MPD #0438



WEATHER PREDICTION CENTER  
NATIONAL OCEANIC AND ATMOSPHERIC ADMINISTRATION

# Watch / Warning Event Timeline

**8:06 PM Saturday June 14**

**Flash Flood Warning Issued  
BASE TAG**

<Forecasters saw rain rates increasing and a cell merger>

**8:24 PM Saturday June 14**

**Flash Flood Watch issued**

<Already in discussion before warning went out to shift watch from the north to the northern WV and southwest PA>

**3:21 AM Sunday June 15**

**Flash Flood Watch  
Extended Into Sunday**

<Little change in atmospheric conditions>

**8:24 PM Saturday June 14**

**Flash Flood Warning  
Upgraded to a  
CONSIDERABLE TAG  
(Phones alerted)**

<Phone calls from spotters, rates increasing on radar, and County Farm IFLOWS observed rainfall>

Weather conditions for:  
COUNTY FARM, WV (FLOWS - PBZ)  
Elev: 1281.0 ft; Lat/Lon: 40.09306/-80.60222  
Get Yearly Precip Total (from QA/QC'd data)  
Get Water Year Precip Total (from QA/QC'd data)  
For selected observations near this location: [click here](#)

Date/Time	5 Min.	1 Hour	3 Hour	6 Hour	24 Hour
Jun 14, 9:10 pm	0.04	1.51	3.37	3.41	3.41
Jun 14, 9:05 pm	0.04	1.63	3.33	3.37	3.37
Jun 14, 9:00 pm	0.04	1.91	3.29	3.33	3.33
Jun 14, 8:45 pm	0.04	2.66	3.25	3.29	3.29
Jun 14, 8:40 pm	0.04	2.66	3.21	3.25	3.25
Jun 14, 8:35 pm	0.1	2.01	3.17	3.21	3.21
Jun 14, 8:30 pm	0.2	1.05	3.05	3.09	3.09
Jun 14, 8:25 pm	0.71	2.81	2.81	2.85	2.85
Jun 14, 8:20 pm	0.16	2.10	2.10	2.14	2.14
Jun 14, 8:15 pm	0.08	1.94	1.94	1.98	1.98
Jun 14, 8:10 pm	0.16	1.86	1.86	1.90	1.90
Jun 14, 8:05 pm	0.32	1.70	1.70	1.74	1.74
Jun 14, 8:00 pm	0.43	1.38	1.38	1.42	1.42
Jun 14, 7:55 pm	0.28	0.95	0.95	0.99	0.99
Jun 14, 7:50 pm	0.08	0.87	0.87	0.71	0.71
Jun 14, 7:45 pm	0.04	0.59	0.59	0.63	0.63
Jun 14, 7:40 pm	0.39	0.55	0.55	0.59	0.59
Jun 14, 7:35 pm	0.16	0.16	0.16	0.20	0.20
Jun 14, 4:00 pm					
Jun 14, 3:50 pm	0.04	0.04	0.04	0.04	0.04

**10:37 PM Saturday June 14**

**Flash Flood Warning  
CONSIDERABLE extended**

<Contacted Emergency Manager, Social media reports, spotter calls to large amount of emergency lights visible from her work>

**PRODUCT  
TIMELINE**

## Ohio County Receives Federal Disaster Declaration



Posted 07/22/25

July 22, 2025  
FOR IMMEDIATE RELEASE

Ohio County Included in Federal Disaster Declaration for June  
Flooding Events

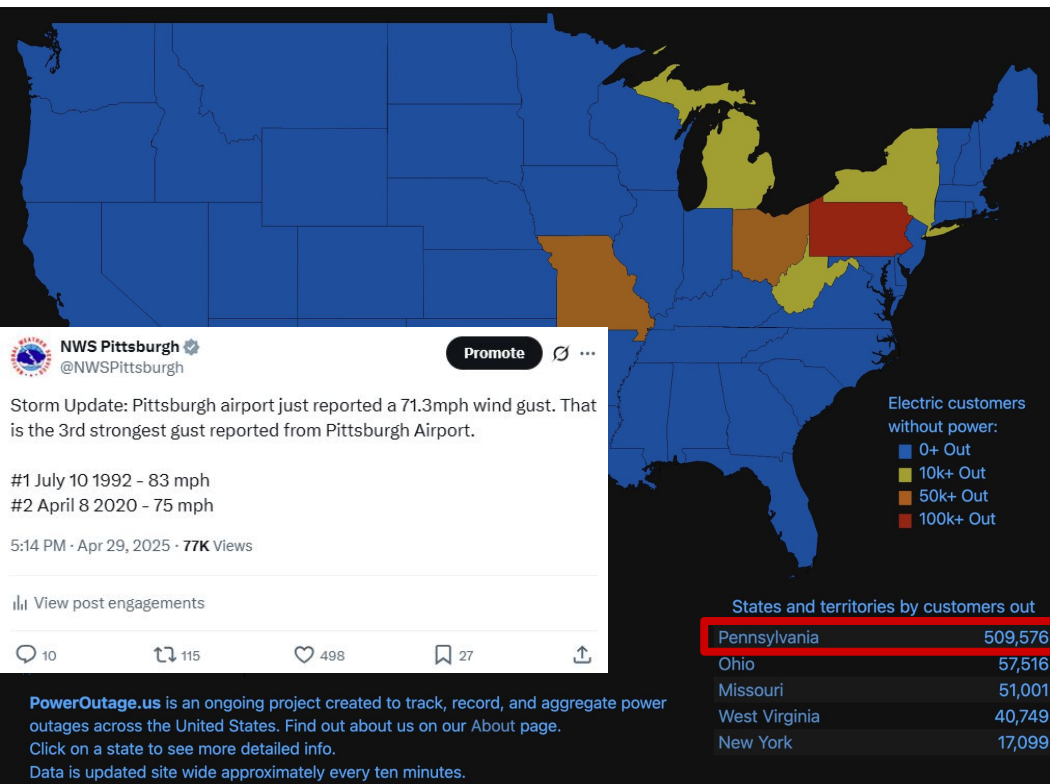
# President Donald J. Trump Approves Major Disaster Declaration for West Virginia

### Trump approves disaster declaration for Ohio, Marion counties in West Virginia

BY: LORI KERSEY - JULY 23, 2025 12:23 PM



# Other Notable Event April 29 2025



## 'Short, sharp storm': Fast-moving squall line leaves death, widespread destruction in W.Pa.

TRIB  
LIVE

TRIBLIVE | Wednesday, April 30, 2025 12:28 p.m.

[Go Ad-Free Today!](#)



MASSOUD HOSSAINI | TRIBLIVE



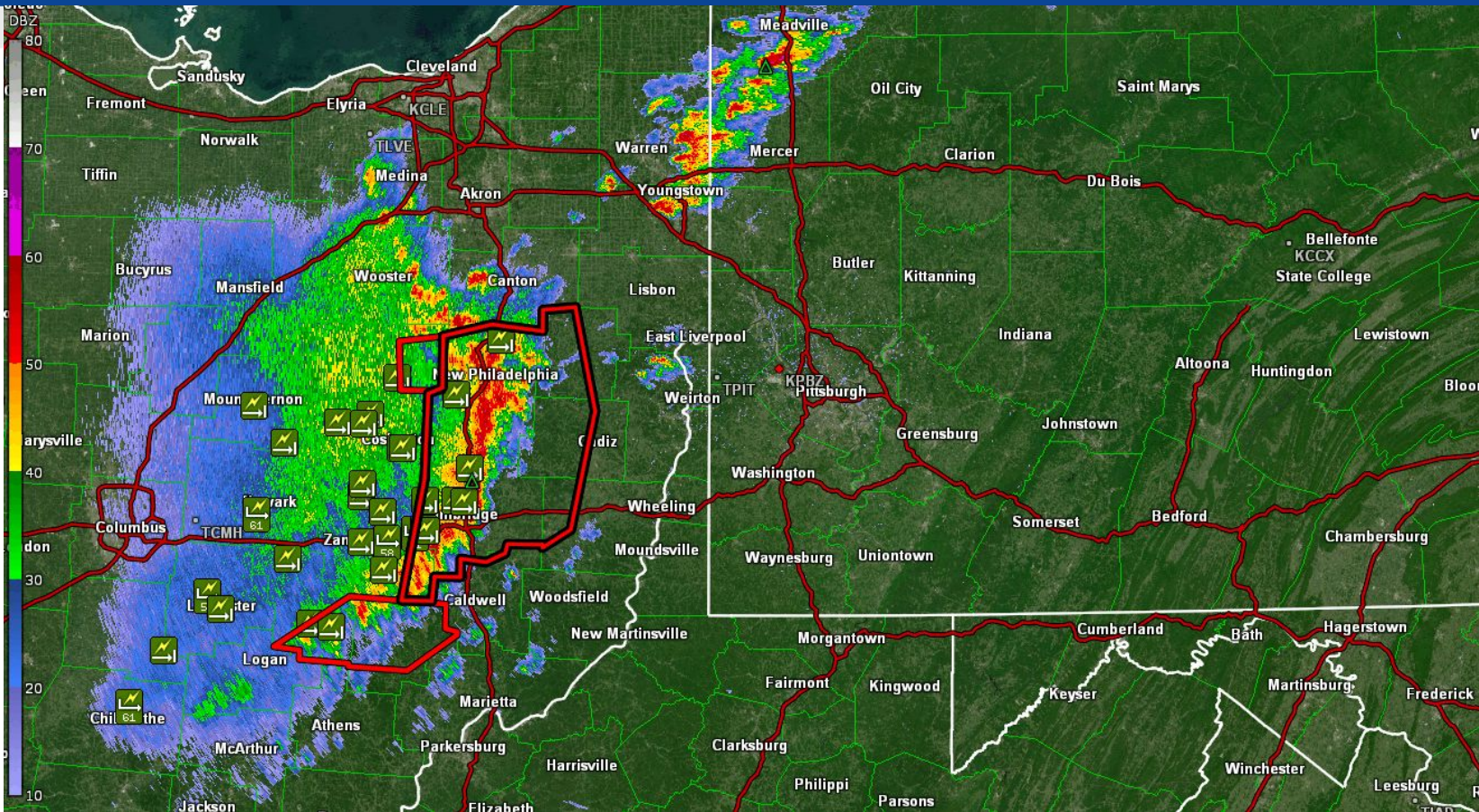
**Two storm-related deaths confirmed, around 400,000 without power after severe weather sweeps through Pittsburgh area**



# Event Radar Loop

Loop  
Begins at  
2:52pm

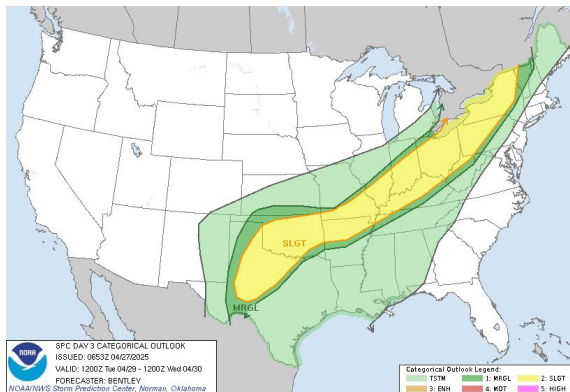
Loop Ends  
at 5:52pm



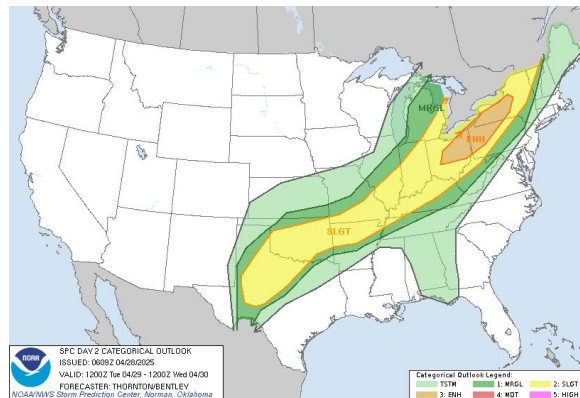
National Oceanic and  
Atmospheric Administration  
U.S. Department of Commerce

National Weather Service  
Pittsburgh, PA

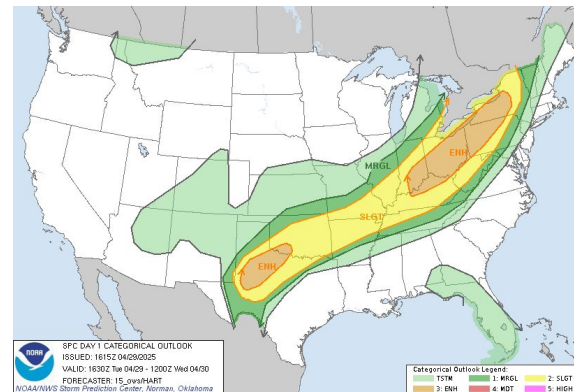
# Storm Prediction Center Outlooks



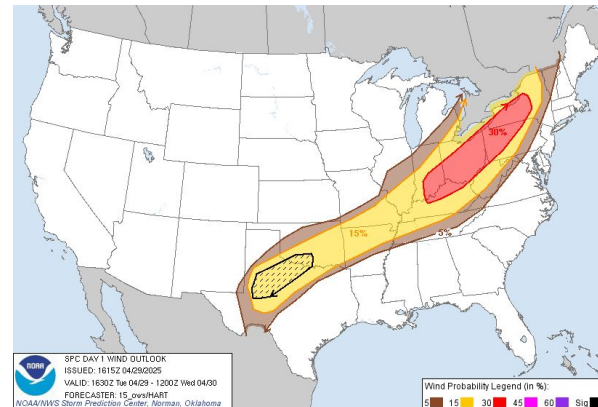
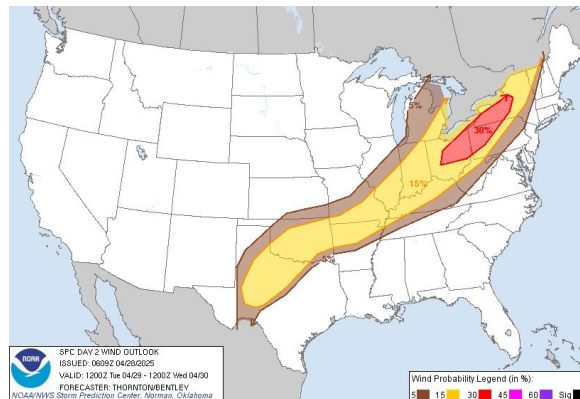
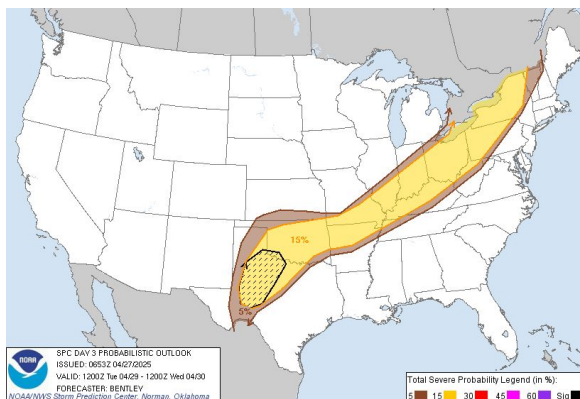
Day 3 midnight outlook 4/27



Day 2 midnight outlook 4/28



Day 1 morning update 4/29



## Find us at:



/NWS Pittsburgh



@NWS Pittsburgh

[weather.gov/pittsburgh](https://weather.gov/pittsburgh)

[fred.mcmullen@noaa.gov](mailto:fred.mcmullen@noaa.gov)