



NOAA
National
Weather
Service

Weather Forecast Office Tropical Products & Services

Jessica Schauer

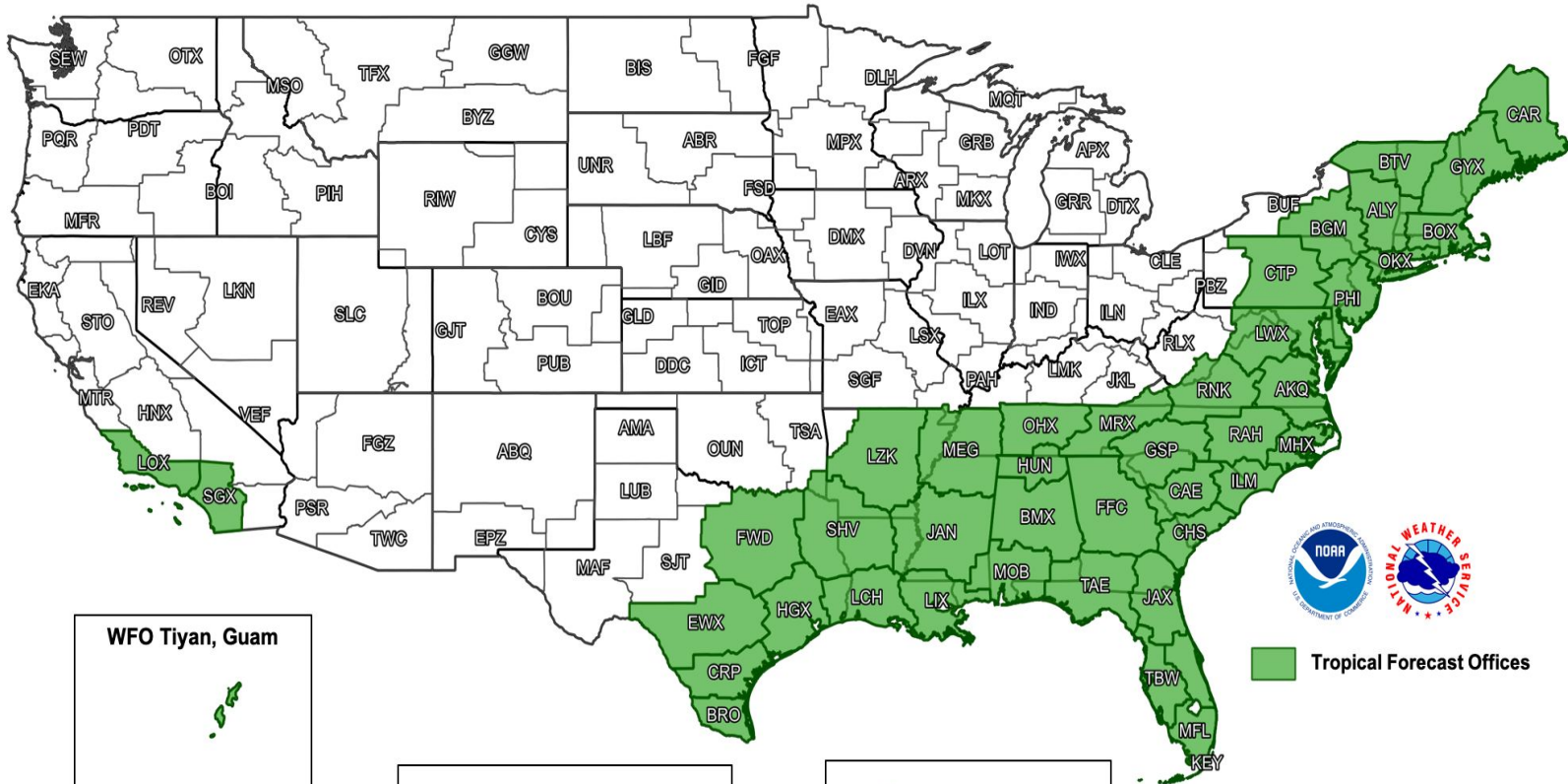
NWS Tropical Services Program Manager

January 26, 2023






Offices that Issue Tropical Products



WFO Tiyan, Guam



Including Micronesia (Republic of the Marshall Islands, Federated States of Micronesia, Republic of Palau)

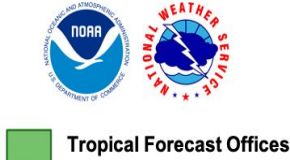
WSO Pago Pago, American Samoa
Including Swains Island



WFO Honolulu, Hawaii



WFO San Juan, Puerto Rico

The appropriate hurricane center (NHC or CPHC) determines the *coastal* tropical storm and/or hurricane watches and warnings (W/Ws)

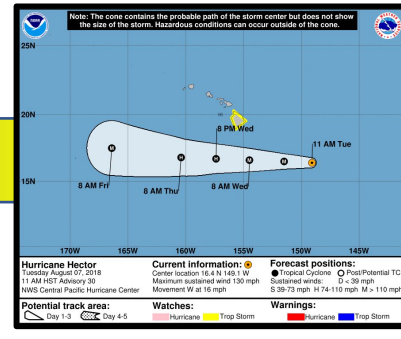
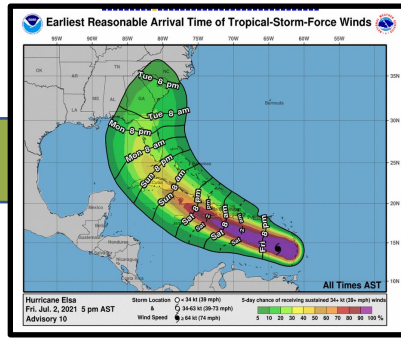
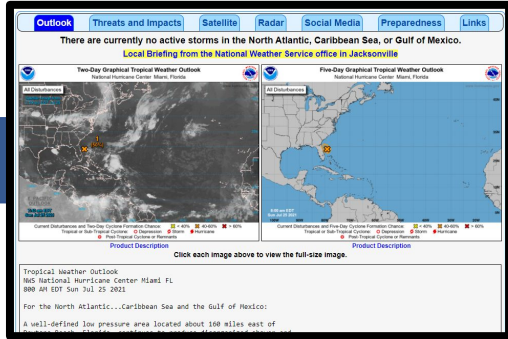
Local NWS Weather Forecast Offices (WFOs) determine *inland* tropical wind W/Ws as well as W/Ws for most other associated hazards (flooding for example).

Inland offices that do not issue tropical products will issue High Wind headlines in an NPW product in lieu of tropical storm or hurricane W/Ws if conditions warrant

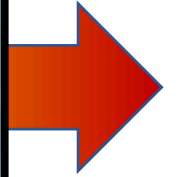
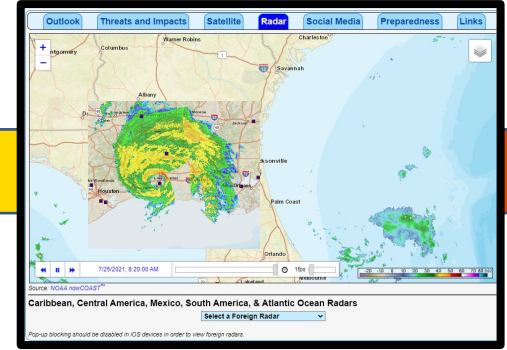


Communicating the Local Tropical Threat

Pre-Watch Phase



Watch / Warning

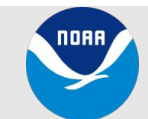


Briefings, Emails, Social Media, Chat, Weather Stories, Forecast Discussion

HTI and GHWO
Hurricane Threats and Impacts
Graphical Hazardous Weather Outlook

HLS and TCV
Hurricane Local Statement
Watches and Warnings

EWW
Extreme Wind Warning

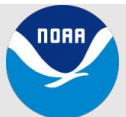


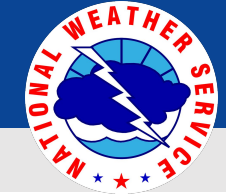


Weather Forecast Office (WFO) Tropical Products

Product	Purpose	Timeframe
TCV Tropical Cyclone Local Watch / Warning Product	Official Watch/Warning Product for Dissemination Detailed zone-based product with threats and impacts for all hazards (wind, surge, flooding rain, tornadoes)	Starts when watches or warnings are issued NHC TCP must be issued before office TCV can be created (Atlantic and East Pacific)
HLS ¹ Hurricane Local Statement	Overview of the storm and a summary of potential impacts and preparedness information for land areas only.	Starts when watches or warnings are issued WFO TCV must be sent before HLS can be created
HTI Hurricane Threats and Impacts	KML, grid, and graphical depiction of wind, surge, flooding, and tornado threats	Required when TCV is issued. May be sent up to 72 hours prior to onset of tropical storm force winds.
EWV Extreme Wind Warning	Short duration warning to advise public and partners of onset of major hurricane-force winds.	Only issued for when sustained winds of 115 mph or greater are occurring or expected to occur within an hour.

¹ HLS will contain any Watches/Warnings for American Samoa and Guam. Those offices do not issue a TCV product





TCV – Tropical Cyclone Watch/Warning

1 Segment for each NWS Forecast Zone.
Has coding to activate NOAA Weather Radio, Emergency Alert System (EAS), and Wireless Emergency Alerts (WEA).

```

URGENT - IMMEDIATE BROADCAST REQUESTED
Zeta Local Watch/Warning Statement/Intermediate Advisory Number 11A
National Weather Service New Orleans LA AL282020
700 AM CDT Tue Oct 27 2020

LAZ062-272000-
/O.NEW.KLIX.SS.W.1028.201027T1200Z-000000T0000Z/
/O.NEW.KLIX.HU.W.1028.201027T1200Z-000000T0000Z/
/O.UPG.KLIX.HU.A.1028.000000T0000Z-000000T0000Z/
/O.UPG.KLIX.SS.A.1028.000000T0000Z-000000T0000Z/
Orleans-
700 AM CDT Tue Oct 27 2020

...HURRICANE WARNING IN EFFECT...
...STORM SURGE WARNING IN EFFECT...

A Hurricane Warning means hurricane-force winds are expected
somewhere within this area within the next 36 hours

A Storm Surge Warning means there is a danger of life-threatening
inundation, from rising water moving inland from the coastline,
somewhere within this area within the next 36 hours

* LOCATIONS AFFECTED
- New Orleans
- Lakefront Airport
- Lake Catherine

```

NWS Zone

VTEC

Headlines

Each Segment has Sections for Each Hazard: Wind, Surge, Flooding, and Tornadoes. Each section has the “deterministic” forecast, conditions to prepare for, and local impacts.

```

* WIND
- LATEST LOCAL FORECAST: Equivalent Strong Tropical Storm force
wind
- Peak Wind Forecast: 73 mph
- Window for Tropical Storm Force Wind: until early Thursday

- THREAT TO LIFE AND PROPERTY THAT INCLUDES TYPICAL FORECAST
UNCERTAINTY IN TRACK, SIZE AND INTENSITY: Potential for wind 58
to 73 mph
- The wind threat has remained nearly steady from the
previous assessment.
- PLAN: Plan for dangerous wind storm force.
- PREPARE: Remaining efforts to should be completed as soon as
significant wind damage.
- ACT: Move to safe shelter before the wind becomes hazardous.

- POTENTIAL IMPACTS: Significant
- Some damage to roofing and siding materials, along with
damage to porches, awnings, carports, and sheds. A few
buildings experiencing window, door, and garage door
failures. Mobile homes damaged, especially if unanchored.
Unsecured lightweight objects become dangerous
- Several large trees snapped or uprooted, but with
numbers in places where trees are shallow rooted.
fences and roadway signs blown over.
- Some roads impassable from large debris, and more within
urban or heavily wooded places. A few bridges, causeways,
and access routes impassable.
- Scattered power and communications outages, but more
prevalent in areas with above ground lines.

```

Wind Hazard

Deterministic Forecast

Prepare for This

Impacts

```

* FLOODING RAIN
- LATEST LOCAL FORECAST: Moderate rainfall with some heavy rain
- Peak Rainfall: 4.0 inches
- Amount of Rainfall: higher amounts possible

- THREAT TO LIFE AND PROPERTY THAT INCLUDES TYPICAL FORECAST
UNCERTAINTY IN TRACK, SIZE AND INTENSITY: Potential for
moderate flooding rain
- The flooding rain threat has remained nearly steady from
the previous assessment.
- PLAN: Emergency plans should include the potential for
moderate flooding from heavy rain. Evacuations and rescues
are possible.
- PREPARE: Consider protective measures for structures
vulnerable to flooding.
- ACT: Heed any flood watches and warnings. Failure to take
action may result in serious injury or loss of life.

- POTENTIAL IMPACTS: Significant
- Moderate rainfall flooding may prompt several evacuations
and rescues.
- Rivers and tributaries may quickly become swollen with
swifter currents and overspill their banks in a few places,
especially in usually vulnerable spots. Some creeks, canals, bayous,
and ditches overflow.
- Flood waters can enter some structures or foundations. Several
places may experience rapid inundation at underpasses, low-lying
spots, and poor drainage areas. Some streets and parking lots take
on moving water as storm drains and retention ponds overflow.
Driving conditions become hazardous. Some road and bridge
closures.

```

Flooding Rain Hazard

Deterministic Forecast

Prepare for This

Impacts





HLS – Hurricane Local Statement

Overview of Storm from the local perspective

Sections Include:

- New information
- Storm Information
- Situation Overview
- Potential Impacts
- Preparedness Actions (not shown in example)

Impacts ordered by Threat

Hurricane Sally Local Statement Advisory Number 18
National Weather Service Tallahassee FL AL192020
525 PM EDT Tue Sep 15 2020 /425 PM CDT Tue Sep 15 2020/

This product covers eastern Florida panhandle, Florida Big Bend, southeastern Alabama and southwestern Georgia

****HURRICANE SALLY TO BRING LIFE THREATENING FLASH FLOODING TO THE FLORIDA PANHANDLE AND SOUTHEAST ALABAMA****

NEW INFORMATION

* CHANGES TO WATCHES AND WARNINGS:
- None|

* CURRENT WATCHES AND WARNINGS:
- A Tropical Storm Warning is in effect for Central Walton, Coastal Bay, Coastal Gulf, Coffee, Geneva, Holmes, Inland Bay, North Walton, South Walton, and Washington

* STORM INFORMATION:
- About 150 miles west-southwest of Panama City or about 190 miles west of Apalachicola
- 29.5N 88.1W
- Storm Intensity 80 mph
- Movement North or 350 degrees at 2 mph

SITUATION OVERVIEW

Hurricane Sally continues its slow trek towards the Gulf coast this morning. Heavy rain have already fallen across localized areas in the Panhandle. Through Thursday, another 10 to 15 inches will be possible, with isolated higher amounts possibly exceeding 20 inches. Additionally, the probability of Tropical Storm force winds impacting some inland locations across the Panhandle and southeast Alabama continues to gradually increase.

By far, the greatest threat Sally poses to the local area is the potential for flash flooding. Flash Flood warnings are already in effect across the Panhandle and is only expected to get worse over the next 24 to 48 hours. Areas that have the greatest potential of realizing the more extreme accumulations are west of the Apalachicola river, and primarily from Bay county to Dale county and points west.

As far as the wind threat is concerned, Tropical Storm force winds sustained and/or frequent gusts are increasingly likely across portions of the Panhandle and extreme southeast Alabama. Tropical storm force winds could begin as early as late tonight and may linger into Wednesday night.

A few tornadoes will also be possible as rain bands move ashore, and a tornado watch is in effect through at least the daytime hours today, and has been expanded a bit further east. At this time minor coastal flooding is expected to continue across the Panhandle and Big Bend, however, impacts from storm surge appear to be minimal at this time.

New Information

Storm Information

Situation Overview

POTENTIAL IMPACTS

Potential Impacts

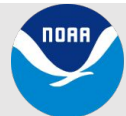
* FLOODING RAIN:
Potential impacts from the flooding rain are still unfolding across the portions of the Florida panhandle. Remain well guarded against life-threatening flood waters having possible devastating impacts. If realized, these impacts include:
- Extreme rainfall flooding may prompt numerous evacuations and rescues.
- Rivers and tributaries may overwhelmingly overflow their banks in many places with deep moving water. Small streams, creeks, and ditches may become raging rivers. Flood control systems and barriers may become stressed.
- Flood waters can enter numerous structures within multiple communities, some structures becoming uninhabitable or washed away. Numerous places where flood waters may cover escape routes. Streets and parking lots become rivers of raging water with underpasses submerged. Driving conditions become very dangerous. Numerous road and bridge closures with some weakened or washed out.

Potential impacts from the flooding rain are still unfolding across portions of the Big Bend and southeast Alabama. Remain well guarded against life-threatening flood waters having possible limited to extensive impacts.

* WIND:
Potential impacts from the main wind event could begin overnight for portions of the Panhandle and southeast Alabama. Remain well sheltered from dangerous wind having possible significant impacts. If realized, these impacts include:
- Some damage to roofing and siding materials, along with damage to porches, awnings, carports, and sheds. A few buildings experiencing window, door, and garage door failures. Mobile homes damaged, especially if unanchored. Unsecured lightweight objects become dangerous projectiles.
- Several large trees snapped or uprooted, but with greater numbers in places where trees are shallow rooted. Several fences and roadway signs blown over.
- Some roads impassable from large debris, and more within urban or heavily wooded places. A few bridges, causeways, and access routes impassable.
- Scattered power and communications outages, but more prevalent in areas with above ground lines.

Potential impacts from the main wind event could begin overnight across the western Big Bend of Florida and extreme southwest Georgia. Remain well sheltered from hazardous wind having possible limited impacts.

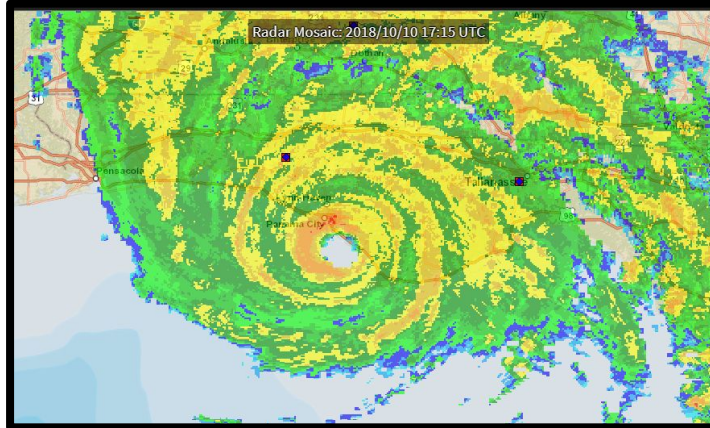
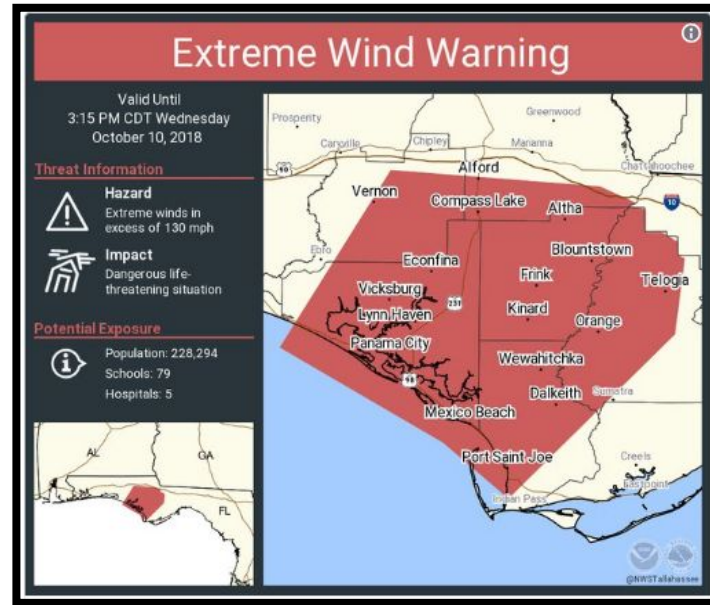
Potential Impacts





EWV – Extreme Wind Warning

- Reserved for events which truly pose a very significant threat of casualties
- With a category 3 or higher hurricane, issued for imminent onset of, or continuance of, winds greater than 115 mph.
- Extreme tropical cyclone winds expected to occur within an hour.
- Valid for three hours or less.
- Will alert via Wireless Emergency Alerts



EWWTAE
 FLC005-013-045-063-077-133-102015-
 /O.NEW.KTAE.EW.W.0002.181010T1715Z-181010T2015Z/

BULLETIN - EAS ACTIVATION REQUESTED
 Extreme Wind Warning
 National Weather Service Tallahassee FL
 115 PM EDT WED OCT 10 2018

The National Weather Service in Tallahassee has issued a

* Extreme Wind Warning for...
 Southern Jackson County in the Panhandle of Florida...
 Gulf County in the Panhandle of Florida...
 Bay County in the Panhandle of Florida...
 Calhoun County in the Panhandle of Florida...
 Liberty County in Big Bend of Florida...
 Southeastern Washington County in the Panhandle of Florida...

* Until 415 PM EDT/315 PM CDT/.

* At 113 PM EDT/1213 PM CDT/, National Weather Service Doppler radar indicated extreme winds in excess of 130 mph, associated with the eyewall of Hurricane Michael, were continuing to move inland. THIS IS AN EXTREMELY DANGEROUS AND LIFE-THREATENING SITUATION!

PRECAUTIONARY/PREPAREDNESS ACTIONS...

TAKE COVER NOW! Treat these imminent extreme winds as if a tornado was approaching and move immediately to the safe room in your shelter. Take action now to protect your life!

&&

A Tornado Watch remains in effect until 500 PM EDT/400 PM CDT/ for Big Bend of and the Panhandle of Florida.

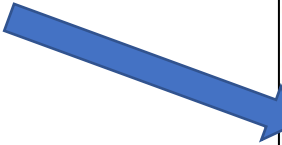
LAT...LON 3072 8566 3067 8502 3062 8491 3061 8493
 3060 8488 3053 8488 3053 8483 3050 8478
 3046 8478 3045 8476 3022 8479 2972 8530
 2989 8550 3018 8600

TIME...MOT...LOC 1713Z 214DEG 20KT 2997 8556



NWS Local Office Tropical Web Page

- A great access point for local office products and resources.
- Available from the navigation menu on the Local Office (WFO) main page
- Linked from hurricanes.gov when a particular WFO is issuing tropical products
- Consistent look and feel across all tropical offices to make it easier for you to find information.
- If a “Local Briefing” is available, it will be linked on the “Outlook” tab with yellow highlighted text
- “Active Storms” and “Local Products” tabs only available when Advisories are being issued



NATIONAL WEATHER SERVICE
NATIONAL OCEANIC AND ATMOSPHERIC ADMINISTRATION

NWS Southern Region Tropical Webpage
Southern Region Headquarters

Local Forecast Offices A-L Local Forecast Offices M-Z River Forecast Centers Center Weather Service Units Regional HQ

NWS Corpus Christi homepage

Outlook Active Storms Threats and Impacts Local Products Satellite Radar Social Media Preparedness Links

National Hurricane Center Advisory 22 for Hurricane Harvey

Update **6 PM CDT POSITION AND INTENSITY UPDATE**

Note: The cone contains the probable path of the storm center but does not show the size of the storm. Hazardous conditions can occur outside of the cone.

Hurricane Harvey
Friday August 25, 2017
4 PM CDT Advisory 22
NWS National Hurricane Center

Current information: x
Center location 27.5 N 96.5 W
Maximum sustained wind 125 mph
Movement NW at 10 mph

Forecast positions:
● Tropical Cyclone ○ Post/Potential TC
Sustained winds: D < 39 mph
S 39-73 mph H 74-110 mph M > 110 mph

Potential track area: Day 1-3 Day 4-5
Watches: Hurricane Trop Stm
Warnings: Hurricane Trop Stm
Current wind extent: Hurricane Trop Stm

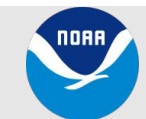
NHC Advisory Text Products

Public Advisory	Forecast Advisory	Forecast Discussion	Wind Speed Probabilities
Tropical Storm Wind Speed Probabilities	Hurricane Wind Speed Probabilities	Earliest Reasonable Arrival Time of Tropical Storm Winds	Most Likely Arrival Time of Tropical Storm Winds

Click image to swap into full size panel above.

Description of the Track Forecast and Wind Speed Probability Maps
Description of the Tropical Storm-Force Wind Arrival Time Maps

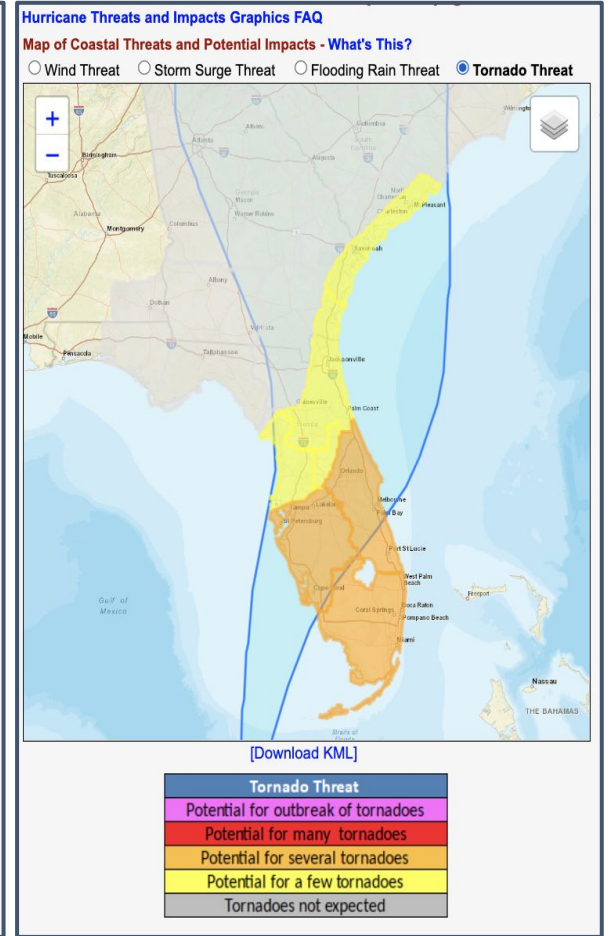
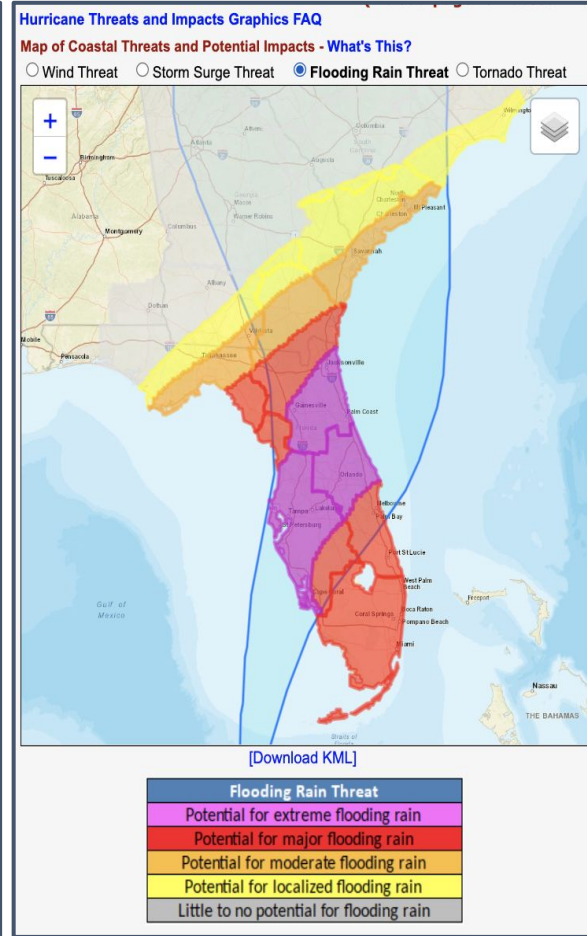
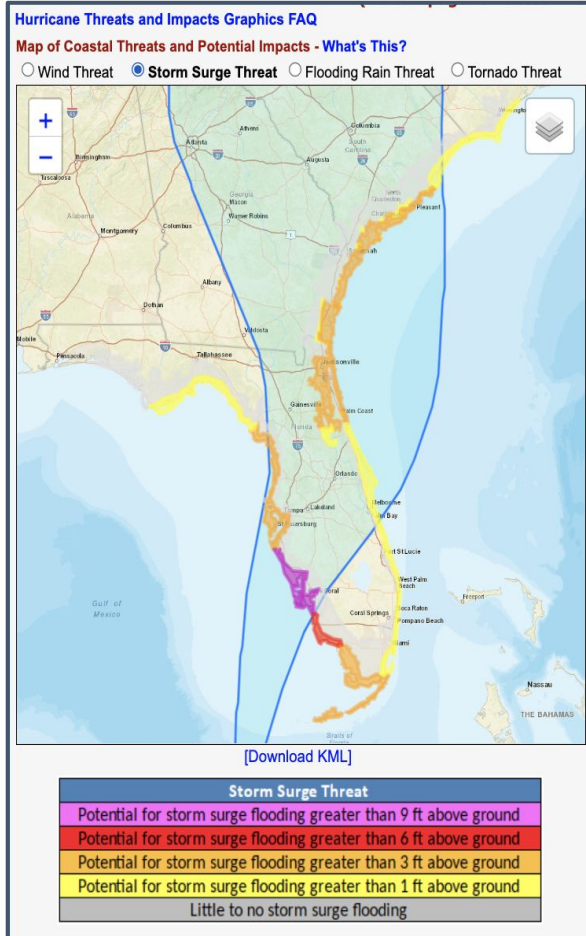
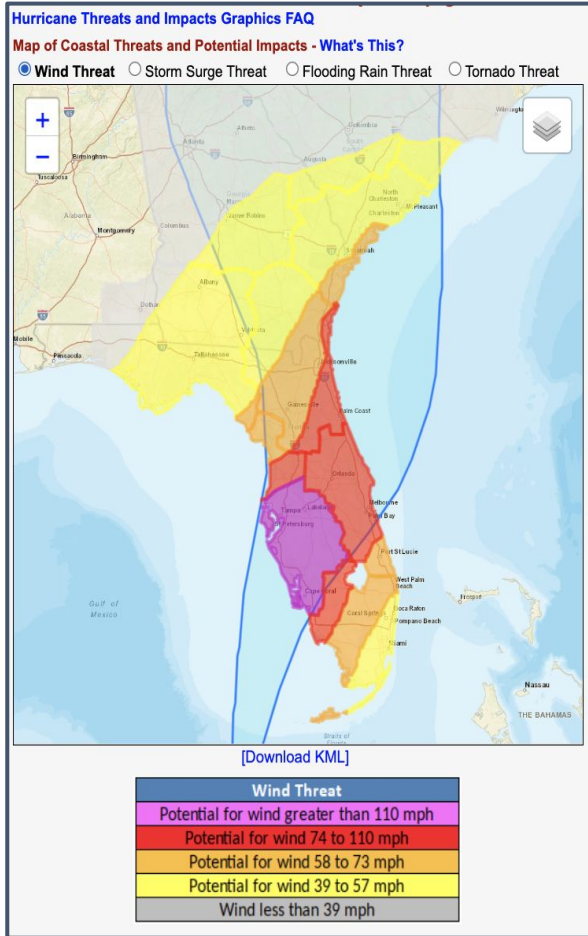
Source: National Hurricane Center





HTI – Hurricane Threats & Impacts

Depicts what you should prepare for – not the deterministic forecast!

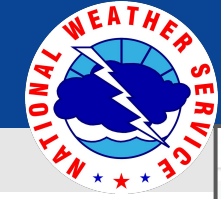


Available on the “Threats and Impacts” tab on the NWS Local Office Tropical Web Page



National Oceanic and Atmospheric Administration

U.S. Department of Commerce



Graphical Hazardous Weather Outlook (GHWO)

NATIONAL WEATHER SERVICE
NATIONAL OCEANIC AND ATMOSPHERIC ADMINISTRATION

Experimental Graphical Hazardous Weather Outlook Weather Forecast Office Miami, FL
Updated: June 3rd 2022, 12:28:17 pm

Public Marine **Tropical**

24 Hr Hazard Risks

	Today	Sat	Sun	Mon	Tue	Wed	Thu
Flooding Rain Threat	[Red bar]						
Wind Threat	[Yellow bar]						
Tornado Threat	[Yellow bar]						
Storm Surge Threat	[Yellow bar]						

For more detailed tropical information, please [click here](#)

<https://www.weather.gov/erh/ghwo?wfo=WFO>

Where **WFO** = the 3 letter identifier for the WFO

Flooding Rain Threat
Weather Forecast Office Miami/South Florida
Issued Jun 03, 2022 11:51 AM EDT

La Belle, W Palm Beach, Immokalee, Fort Lauderdale, Naples, Everglades City, Miami, Homestead, Flamingo

Risk Level Definition

- Little to no potential for flooding rain.
- Potential for localized flooding rain.
- Potential for moderate flooding rain.
- Potential for major flooding rain.
- Potential for extreme flooding rain.

NATIONAL WEATHER SERVICE
NATIONAL OCEANIC AND ATMOSPHERIC ADMINISTRATION

Experimental Graphical Hazardous Weather Outlook Weather Forecast Office Miami, FL
Updated: June 3rd 2022, 12:28:17 pm

Public Marine Tropical

Excessive Rainfall Risk for Fri/Fri Night
Valid 11 AM Fri Jun 03, 2022 to 8 AM Sat Jun 04, 2022
Issued Jun 03, 2022 12:29 PM EDT

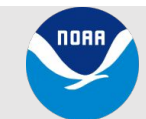
La Belle, W Palm Beach, Immokalee, Fort Lauderdale, Naples, Everglades City, Miami, Homestead, Flamingo

24 Hr Hazard Risks

	Today	Sat	Sun	Mon	Tue	Wed	Thu
Severe Thunderstorm	[Orange]	[Yellow]	[Green]	[Green]	[Green]	[Green]	[Green]
Hail	[Green]	[Green]	[Green]	[Green]	[Green]	[Green]	[Green]
Lightning	[Yellow]	[Yellow]	[Yellow]	[Yellow]	[Orange]	[Yellow]	[Yellow]
Excessive Rainfall	[Red]	[Orange]	[Green]	[Green]	[Green]	[Green]	[Green]
Excessive Heat	[Green]	[Green]	[Yellow]	[Yellow]	[Green]	[Yellow]	[Yellow]
Fog	[Green]	[Green]	[Green]	[Green]	[Green]	[Green]	[Green]
Fire Weather	[Green]	[Green]	[Green]	[Green]	[Green]	[Green]	[Green]
Waterspout	[Orange]	[Green]	[Green]	[Green]	[Green]	[Green]	[Green]

Risk Level Category Definition

- None No Excessive Rainfall Risk.
- Limited Limited Excessive Rainfall Risk. Ponding of water in streets, urban, and poorly drained areas possible.
- Elevated Elevated Excessive Rainfall Risk. Considerable flooding of streets, urban, and poorly drained areas, potentially impacting structures.
- Significant Significant Excessive Rainfall Risk. Life-threatening flash flooding, possibly entering structures and cutting off neighborhoods
- Extreme Extreme Excessive Rainfall Risk. Widespread, life-threatening flash flooding likely, entering structures and affecting many streets and neighborhoods.

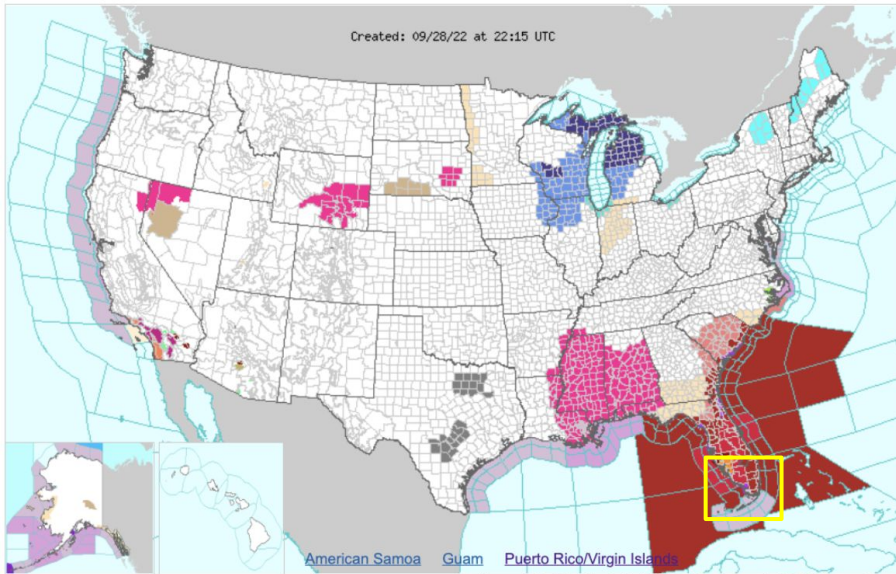


National Oceanic and Atmospheric Administration

U.S. Department of Commerce



Point & Click Forecast on weather.gov



Click on the map above for detailed alerts or [Warnings By State](#) [Public Alerts in XML/CAP v1.2 and ATOM Formats](#)

- Extreme Wind Warning
- Flash Flood Warning
- Storm Surge Warning
- Hurricane Warning
- Tropical Storm Warning
- Storm Warning
- Coastal Flood Warning
- Flood Warning
- Excessive Heat Warning
- Tornado Watch
- Gale Warning
- Freeze Warning
- Red Flag Warning
- Hurricane Watch
- Tropical Storm Watch
- Hurricane Local Statement
- Heat Advisory
- Flood Advisory
- Coastal Flood Advisory
- High Surf Advisory
- Heavy Freezing Spray Warning
- Small Craft Advisory
- Dust Advisory
- Lake Wind Advisory
- Wind Advisory
- Frost Advisory
- Rip Current Statement
- Beach Hazards Statement
- Gale Watch
- Flood Watch
- Freeze Watch
- Fire Weather Watch
- Coastal Flood Statement
- Special Weather Statement
- Marine Weather Statement
- Air Quality Alert

Click a location below for detailed forecast.

Last Map Update: Wed, Sep. 28, 2022 at 6:13:32 pm EDT

Zoom In / Zoom Out

Watches, Warnings & Advisories

- Extreme Wind Warning
- Flash Flood Warning
- Storm Surge Warning
- Hurricane Warning
- Tropical Storm Warning
- Coastal Flood Warning
- Flood Warning
- Tornado Watch
- Storm Surge Watch
- Hurricane Watch
- Hurricane Local Statement
- Flood Advisory
- Small Craft Advisory
- Flood Watch
- Coastal Flood Statement
- Special Weather Statement
- Marine Weather Statement
- Hazardous Weather Outlook
- Short Term Forecast

Hazardous Weather Conditions

- Hurricane Local Statement
- Flood Watch until September 29, 08:00 AM EDT
- Tropical Storm Warning

En Español | Share | Facebook | Twitter | YouTube | RSS

Current conditions at **Hollywood, North Perry Airport (KHWO)**
Lat: 26°N Lon: 80.24°W Elev: 7ft.

81°F
27°C

Humidity 77%
Wind Speed S 15 G 28 mph
Barometer 29.62 in (1003.2 mb)
Dewpoint 73°F (23°C)
Visibility 10.00 mi
Heat Index 86°F (30°C)
Last update 28 Sep 5:53 pm EDT

More Information:
[Local Forecast Office](#)
[More Local Wx](#)
[3 Day History](#)
[Mobile Weather](#)
[Hourly Weather Forecast](#)

Extended Forecast for 3 Miles SE Weston FL

Click here for hazard details and duration

Now: Multiple hazards in effect

Tonight: Tropical Storm Conditions Possible
Low: 78 °F

Thursday: Chance T-storms and Windy
40%
High: 86 °F

Thursday Night: Chance T-storms then Showers
30% | 30%
Low: 73 °F

Friday: Slight Chance T-storms
20%
High: 87 °F

Friday Night: Slight Chance T-storms
20%
Low: 71 °F

Saturday: Sunny
High: 88 °F

Saturday Night: Mostly Clear
Low: 71 °F

Sunday: Sunny
High: 87 °F

Detailed Forecast

Tonight: Tropical storm conditions possible. Showers and thunderstorms, mainly before 2am. Some of the storms could produce heavy rain. Low around 78. Chance of precipitation is 80%. New rainfall amounts between a quarter and half of an inch possible.

Thursday: A 40 percent chance of showers and thunderstorms. Mostly sunny, with a high near 86. Windy, with a southwest wind 21 to 24 mph, with gusts as high as 37 mph.

Thursday Night: A 30 percent chance of showers and thunderstorms, mainly before 2am. Partly cloudy, with a low around 73. Southwest wind 13 to 15 mph, with gusts as high as 23 mph.

Friday: A 20 percent chance of showers and thunderstorms. Mostly sunny, with a high near 87. West wind 10 to 14 mph, with gusts as high as 23 mph.

Friday Night: A 20 percent chance of showers and thunderstorms before 2am. Mostly clear, with a low around 71. West wind 5 to 8 mph.

Saturday: Sunny, with a high near 88. Northwest wind 5 to 8 mph.

Saturday Night: Mostly clear, with a low around 71. South wind around 6 mph becoming west after midnight.

Sunday: Sunny, with a high near 87. Northwest wind 3 to 6 mph.

Sunday Night: Mostly clear, with a low around 70. Light northwest wind.

Monday: Sunny, with a high near 87.

Monday Night: Partly cloudy, with a low around 70.

Tuesday: Sunny, with a high near 86.

Tuesday Night: Partly cloudy, with a low around 71.

Wednesday: A 20 percent chance of showers and thunderstorms. Mostly sunny, with a high near 86.

Topographic Click Map For Forecast

Forecast Area

Point Forecast: 3 Miles SE Weston FL
26.08°N 80.38°W

Last Update: 5:55 pm EDT Sep 28, 2022

Forecast Valid: 6pm EDT Sep 28, 2022-6pm EDT Oct 5, 2022

[Forecast Discussion](#)

KML XML



Post Tropical Cyclone Reports

POST TROPICAL CYCLONE REPORT...HURRICANE IDA
NATIONAL SERVICE NEW ORLEANS LA
318 PM CDT WED SEP 1 2021

NOTE: THE DATA SHOWN HERE ARE PRELIMINARY...AND SUBJECT TO UPDATES AND CORRECTIONS AS APPROPRIATE.

THIS REPORT INCLUDES EVENTS OCCURRING WHEN WATCHES AND/OR WARNINGS WERE IN EFFECT...OR WHEN SIGNIFICANT FLOODING ASSOCIATED WITH ZETA AFFECTING THE AREA.

ASCENSION...ASSUMPTION...EAST BATON ROUGE...
LLE...JEFFERSON...LAFOURCHE...LIVINGSTON...
...POINT COUPEE...ST. BERNARD...ST. CHARLES...
...ST. JOHN THE BAPTIST...ST. TAMMANY...
TANGIPAHOLA...TERREBONNE...WASHINGTON...WEST BATON ROUGE...WEST FELICIANA.

MS COUNTIES INCLUDED...AMITE...HANCOCK...HARRISON...JACKSON...PEARL RIVER...PIKE...WALTHALL...WILKINSON...

9/1/2021 - INITIAL ISSUANCE INCLUDES WIND, PRESSURE, SURGE AND RIVER CREST DATA FROM AUTOMATED STATIONS. THIS PRODUCT WILL LIKELY BE UPDATED SEVERAL TIMES OVER THE NEXT TWO WEEKS WITH ADDITIONAL DATA AS WE CONTINUE TO COLLECT, ANALYZE AND QUALITY-CONTROL OBSERVATIONS.

LOWEST SEA LEVEL PRESSURE/MAXIMUM SUSTAINED WINDS AND PEAK GUSTS

...OBSERVATIONS...
...ANEMOMETER HEIGHT IS 10 METERS AND WIND AVERAGING IS 2 MINUTES

STATION	ID	MIN	DATE/ PRES	MAX	DATE/ SUST	PEAK	DATE/ GUST	DATE/ TIME
LONG			(MB)	(KT)	(KT)	(KT)	(UTC)	(UTC)

KGAO-GALLIANO		29.44	-90.26	150/061	29/2035	100/085	29/1855	
---------------	--	-------	--------	---------	---------	---------	---------	--

KMSY-NEW ORLEANS ARMSTRONG INTL AIRPORT		29.98	-90.25	977.3	29/2353	090/054	29/2240	I 150/078 30/0137 I
---	--	-------	--------	-------	---------	---------	---------	---------------------

KNEW-NEW ORLEANS LAKEFRONT AIRPORT		30.04	-90.03	990.4	29/2253	I 100/057	29/2216	I 110/075 29/2148 I
------------------------------------	--	-------	--------	-------	---------	-----------	---------	---------------------

KAPS-RESERVE		30.09	-90.58	210/051	30/0315	210/069	30/0315	
--------------	--	-------	--------	---------	---------	---------	---------	--

KREG-GONZALES		30.17	-90.94	320/041	30/0035	I 310/065	30/0115	I
---------------	--	-------	--------	---------	---------	-----------	---------	---

KGPT-GULFPORT AIRPORT		30.40	-89.07	1004.4	30/2207	130/041	29/2315	150/064 30/0729
-----------------------	--	-------	--------	--------	---------	---------	---------	-----------------

KASD-SLIDELL AIRPORT		30.35	-89.82	998.8	30/0048	140/038	30/0355	110/060 30/0119
----------------------	--	-------	--------	-------	---------	---------	---------	-----------------

2022 and earlier:
LONG Text Product

Hard to parse
Not intuitively
readable

2023 and beyond:
SHORT Text Product to let
users know when new data
is available

ACUS74 KLIX 202040
PSHLIX

Post Tropical Cyclone Report...Hurricane Ida
National Weather Service New Orleans LA
1014 PM CDT Fri Sep 10 2021

A readable summary of observations and impacts within the WFO New Orleans County Warning Area for Hurricane Ida can be found here:
https://www.weather.gov/media/lix/TropicalEventSummary/2021_Ida.pdf

Comma-Separated Value (CSV) and additional Portable Document Format (PDF) files that include more thorough listings of observations and impact information can be found here:
<https://www.weather.gov/lix/TropicalEventSummary>

NOTE: The data provided are preliminary. They are subject to updates and corrections as appropriate.

\$\$

Forecaster

Local Observations And Impacts From Past Tropical Cyclones

This page provides links to observational data from our local area for tropical cyclone events since 2021.

NOTE: Point-based observations are unlikely to sample the most extreme conditions.

2021

- Hurricane Ida
 - Observational data summary
 - Impacts report
 - Downloadable observational data (CSV format)
 - Wind and Pressure
 - Rainfall
 - Water Levels
 - Tornadoes

Readable
summaries AND
parsable data

Simple Website housing readable
PDF summaries and downloadable
CSV data



Post Tropical Cyclone Reports

Human-Readable Files (PDFs)

Summary

- Top 10 lists
- “Quick View” for extremes and other common questions

Impact Narratives

- Similar to current PSH narratives
- Fatalities/injuries/evacuations and impacts for each county/parish/island/etc

Tornado Summaries

- Survey summary PNS
- More data than currently included in the PSH!

Machine-Readable Files (CSVs)

Wind and Pressure

- Peak wind speeds and gusts
- Minimum pressures

Rainfall

- Storm total rainfall
- Standardized to 12z-12z

Water Level

- Peak Water Levels
- Tide gages, some river gages, and high water marks

Tornado

- Limited data for offices that don't produce PNSs





Post Tropical Cyclone Reports

Impacts Narrative PDF

Parish and County Impacts Associated with Hurricane Ida (2021)

Narratives listed in alphabetical order with LA parishes first, followed by MS counties.

Updates:

- 09/28/2021 - Corrected gender of storm surge fatality in Jefferson Parish storm impacts narrative. Added a couple more details to Jefferson and St. Tammany Parishes, and Hancock, Harrison and Jackson Counties based on high water mark surveys, new tornado surveys and/or additional news reports.
- 09/21/2021 - Initial issuance.

Parish Name Ascension	Injuries: Unknown	Fatalities: 1 direct	Evacuations: 93
---------------------------------	----------------------	-------------------------	--------------------

The parish suffered widespread damage to trees, powerlines and homes due to wind. Numerous homes also suffered minor to moderate damage, mainly to roofs, as well as on his home. Over 100 roads across the parish were closed due to downed poles, or other debris. This includes I-10 between Prairieville and Gramercy, and several trees. At the peak nearly the entire parish was without power.

Parish Name Assumption	Injuries: Unknown	Fatalities: 0
----------------------------------	----------------------	------------------

The parish suffered minor to moderate wind damage. Several trees and power poles were downed as well. Most structural damage was in the form of shingle loss, although a few properties suffered more significant damage due to falling trees and debris. Nearly the entire parish was without power.

Parish Name East Baton Rouge	Injuries: Unknown	Fatalities: 2 indirect
--	----------------------	---------------------------

Ida's winds downed numerous trees, power lines and power poles across the parish. Several roads closed due to downed trees/lines or debris. Several structures suffered minor damage. Nearly 250,000 homes/businesses were without power during the peak. In the parish, heat-related fatalities occurred.

Parish Name East Feliciana	Injuries: Unknown	Fatalities: 0
--------------------------------------	----------------------	------------------

The parish suffered widespread tree damage with mostly minor to moderate damage to structures. A few homes suffered major damage due to falling trees. Several trees or other debris. At the peak approximately 60% of the parish was without power.

Summary PDF

POST TROPICAL CYCLONE REPORT

Storm Name	Hurricane Ida
NWS Office	New Orleans/Baton Rouge, LA
Begin/End Date	8/28/2021 - 8/31/2021
Fatalities	6 - Direct 25 - Indirect
Tornadoes	17

Event Summary

Hurricane Ida made landfall in southeast Louisiana as a category 4 hurricane and brought devastating impacts near the center of its path. Storm surge flooding overtopped numerous local levees, with some waves overtopping the Larose to Golden meadow levee as well. Ida maintained its intensity well inland from the coast, producing widespread significant wind damage to much of the area.

NOTE: It is unlikely that the point-based observations provided in this report sampled the peak values for the event.

Highest 10 Land Winds (mph)*

Station	State	Type	Sustained	Gust
Dulac	LA	WxFlow	87	120
Laplace	LA	PWS	86	
Galliano	LA	FCMP	81	106
1 NW Killona	LA	TTU Sticknet	70	96
Bourg	LA	PWS	70	
1 N Live Oak	LA	TTU Sticknet	64	86
Mandeville	LA	WxFlow	63	96
Waggaman	LA	WxFlow	63	80
4.7 S Vacherie	LA	TTU Sticknet	61	77
2 E Raceland	LA	TTU Sticknet	60	83

* Anemometer heights < 20 m

Observations in Comma-Separated Values (CSV) Format

Wind & Pressure

Site ID	Site Name	Latitude	Longitude	County/Parish (land-based stations only)	State (land-based stations only)	Land (L) or Marine (M)	Observing Network	Anemometer Hgt (m)	Averaging Period (min)	Max Sustained Wind (knots)
2	KGAO Galliano	29.4350	-90.2630	Lafourche	LA	L	AWOS	10.0	2	61
3	KMSY New Orleans International	29.9800	-90.2500	Jefferson	LA	L	ASOS	10.0	2	54

Tornadoes

City/Town	Latitude	Longitude	County/Parish	State	Time (UTC)	Day	Month	Year	EF Scale
1 WSW Pass Christian	30.3155	-89.2582	Harrison/Hancock	MS	1123	29	8	2021	EF-1

Rainfall

Site ID	Site Name	Latitude	Longitude	County/Parish	State	Observing Network
2	MS-HC-09 Kiln 3.3 N	30.4600	-89.4300	Hancock	MS	CoCoRa
3	MS-HR-34 Biloxi 13.1 NNW	30.5700	-89.0500	Harrison	MS	CoCoRa

Water Levels

Site ID	Site Name	Latitude	Longitude	County/Parish	State
2	WYCM6 Waveland	30.3250	-89.3250	Hancock	MS
3	SHBL1 Shell Beach	29.8681	-89.6732	St. Bernard	LA



NOAA

National
Weather
Service

Thank you from the National Weather Service Weather Forecast Offices!

Jessica Schauer

NWS Tropical Services Program Manager

Jessica.Schauer@noaa.gov