



# NATIONAL WEATHER SERVICE

*Protecting Lives and Property for 150 Years*



## What Makes A Big Flood In the Northeast?

*It's not just about heavy rainfall...*

David R. Vallee  
Hydrologist-in-Charge  
NOAA/NWS Northeast River Forecast Center  
[weather.gov/nerfc](http://weather.gov/nerfc)



Record flooding on Pawtuxet River, West Warwick, RI  
– March 31<sup>st</sup>, 2010. Source: D. Vallee/NWS



Record flooding in Dolgeville, NY on West Canada  
Creek, November 1<sup>st</sup>, 2019. Source: D. McGee



Flash Flooding on the Long Island Expressway from 11  
inches of rain in ~ 3 hours! August 13<sup>th</sup>, 2014.

# Overview

- The ingredients necessary for significant floods
- The types of storm systems capable of producing significant floods
- Antecedent conditions are key!
- Can happen anytime of year in the region



Record flooding along the Shawsheen River during the Mother's Day Floods, Lawrence, MA – May 16<sup>th</sup>, 2006. Source: Eagle Tribune



**NATIONAL WEATHER SERVICE**

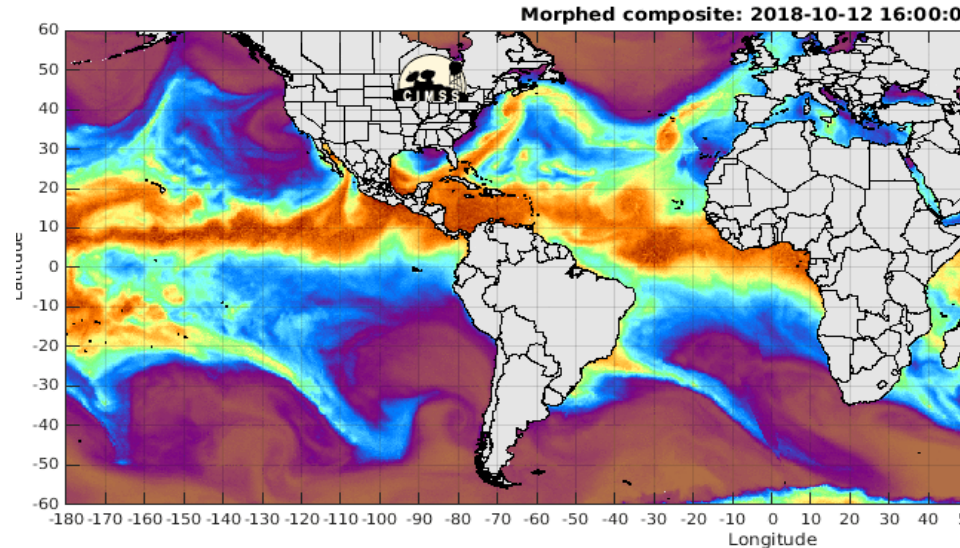
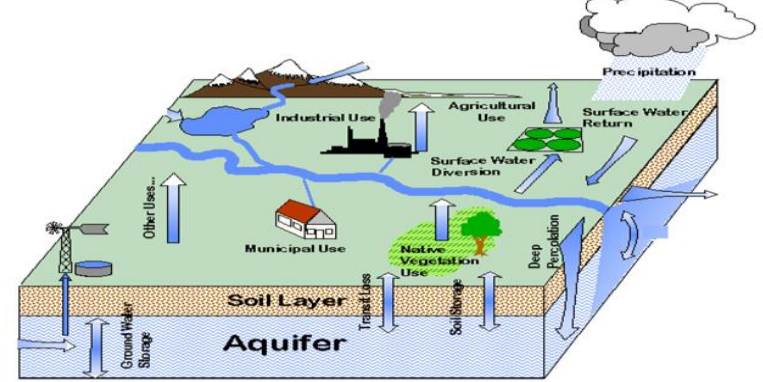
*Protecting Lives and Property for 150 Years*

<http://weather.gov/nerfc>

Building a Weather-Ready Nation // 2

# Key Ingredients

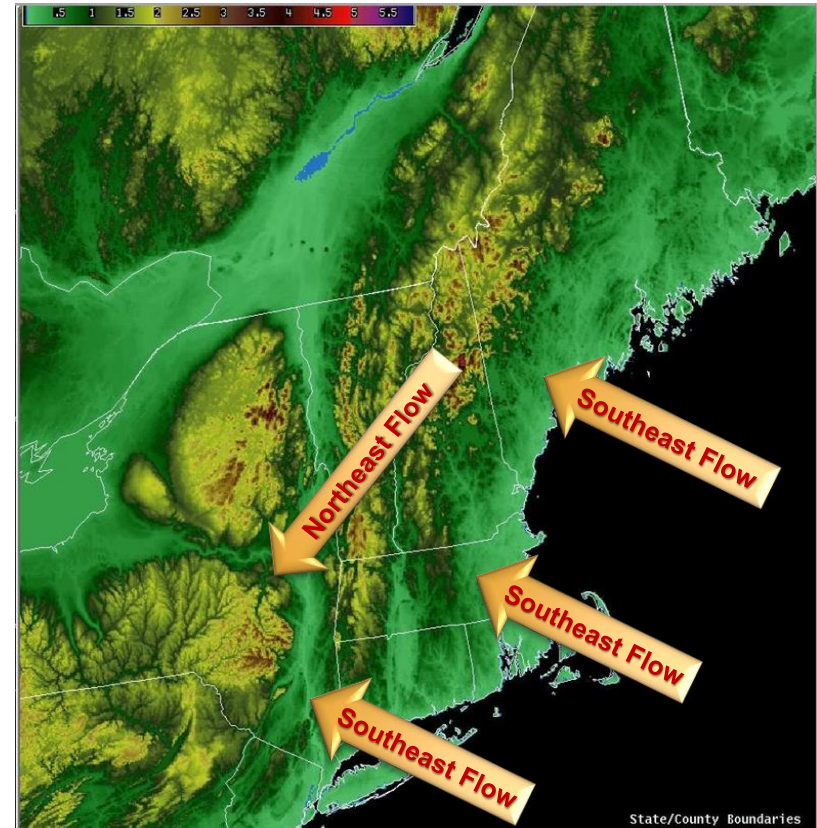
- Antecedent conditions:
  - Soil moisture and streamflow
  - Snow water in the snowpack
- The theme of the pattern
  - An active weather pattern
  - Anomalous moisture content for the given time of year
    - Tropical connections!
  - Slow moving fronts/storms
  - One behemoth storm or multiple storms in a row
  - Is it driven by thunderstorms





# Don't forget the "Givens"

- The significance of the terrain
  - Upslope and add a lot of vigor to rainfall production
- The urban corridors
  - Too much impervious surface and / or an aging & under-designed stormwater infrastructure
  - Too much encroachment into the floodplain



**NATIONAL WEATHER SERVICE**

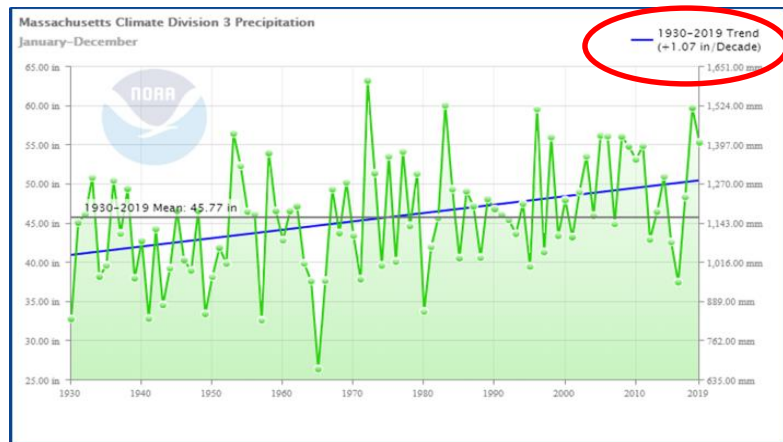
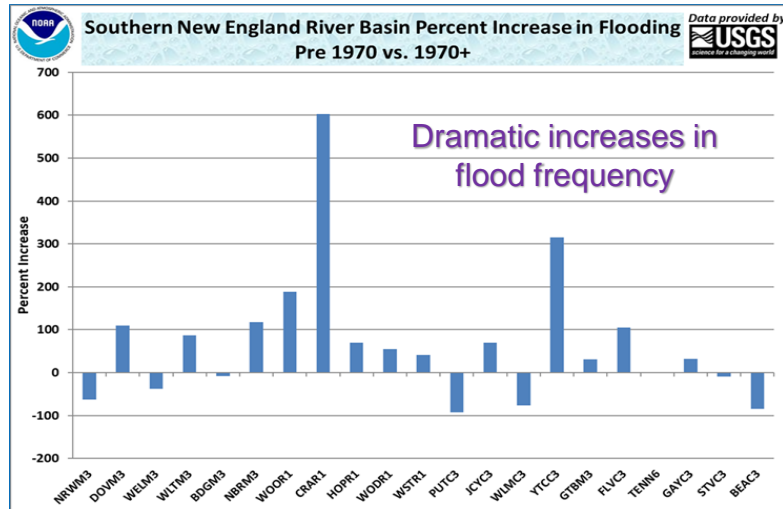
*Protecting Lives and Property for 150 Years*

<http://weather.gov/nerfc>

Building a Weather-Ready Nation // 4

# Our Changing Climate!

- Common themes across New England:
  - Increasing annual precipitation
  - Increasing frequency of heavy rains
  - Warming annual temperatures
  - Wildly varying seasonal snowfall
- Shift in precipitation frequency (50, 100 yr – 24 hr rain)
- For smaller (<800 sq mi) basins:
  - Trend toward increased flood magnitude and/or frequency
  - Most pronounced where significant land use change and/or urbanization has occurred



NATIONAL WEATHER SERVICE

Protecting Lives and Property for 150 Years

<http://weather.gov/nerfc>

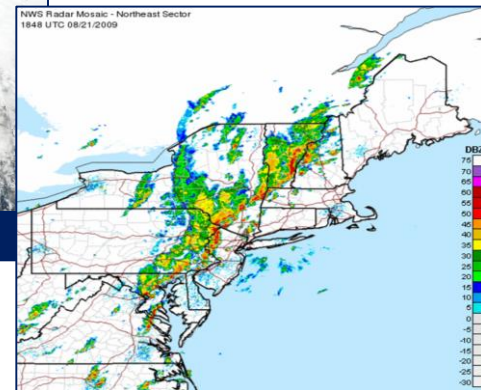
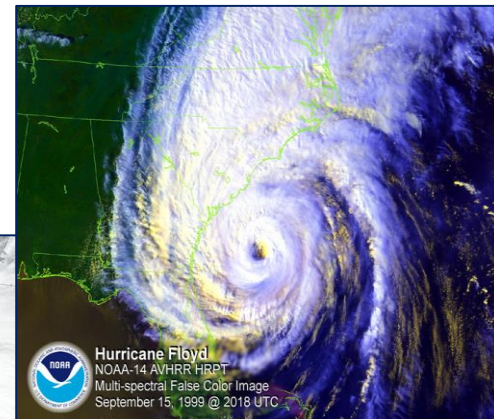
Building a Weather-Ready Nation // 5

# Types of Storm Systems

- Large scale storms
  - Nor'easters accompanied by significant warm up, rapidly melting snows, and heavy rainfall
  - Tropical Cyclones – historically the most devastating of all events!
  - Southern Gales – large intense storm moving through the Great Lakes driving wind and rain through the region
- Stalled out fronts where thunderstorms erupt
  - Summertime occurrence
  - Typically isolated to small areas of impact
  - Hard to predict accurately in advance



The Blizzard of January 2018



Training thunderstorms producing Flash Flooding – August 2009



NATIONAL WEATHER SERVICE

Protecting Lives and Property for 150 Years

<http://weather.gov/nerfc>

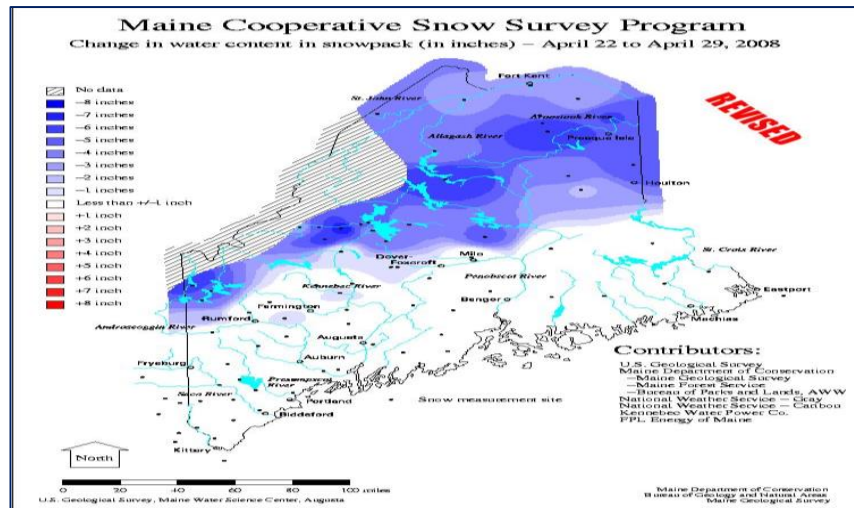
Building a Weather-Ready Nation // 6



# Exhibit A: April 2008

## Snowmelt & back to back rains!

- Deep and wet snowpack
  - Water content of 6 to 14 inches on April 22<sup>nd</sup>
  - 4 to 8 inches lost just between April 22<sup>nd</sup> and 29<sup>th</sup>
- Active weather pattern
  - Produce back to back significant rainfall events
  - Total precipitation for the week of April 22-29 was 4-8 inches
- The result: Record Flooding



Record flooding along Fish and Saint John Rivers in northern Maine, April 29<sup>th</sup>, 2008. Source: USGS



NATIONAL WEATHER SERVICE

Protecting Lives and Property for 150 Years

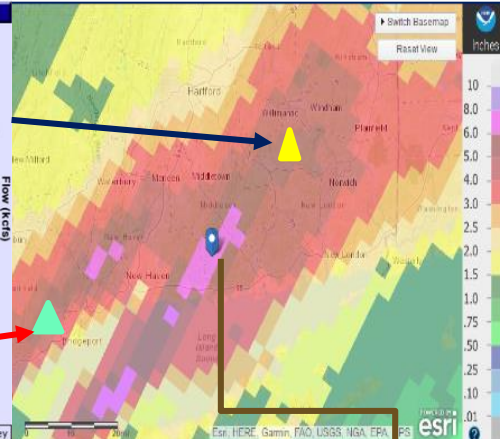
<http://weather.gov/nerfc>

Building a Weather-Ready Nation // 7

# Exhibit B: Flash Flooding in Connecticut

## Slow moving front with training thunderstorms, Sept 2018

- Slow moving cold front and very tropical air produced training thunderstorms & 5-8 inches of rain
  - Moving over the same locations over a 3-6 hour period
- The result: Water Rescues



**Killingsworth, CT received 6.78 inches in < 12 hours**  
3hr ~ 50 yr event and the 6-12 hr ~ 75-100 yr event

Duration	Obs	Approx ARI	1	2	5	10	25	50	100
1h	1.56	~5-yr	0.993	1.2	1.53	1.81	2.19	2.49	2.78
2h	2.95	~25-yr	1.31	1.58	2.01	2.37	2.86	3.24	3.63
3h	3.74	~50-yr	1.53	1.83	2.34	2.75	3.32	3.76	4.21
6h	4.95	>50-yr	1.95	2.34	2.98	3.51	4.24	4.8	5.36
12h	6.21	>50-yr	2.42	2.91	3.71	4.38	5.29	6	6.7
24h	6.78	>25-yr	2.84	3.44	4.43	5.25	6.38	7.25	8.13



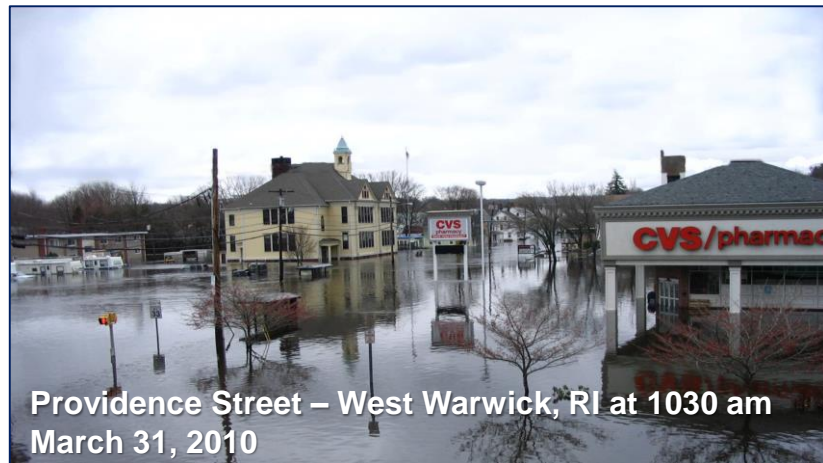
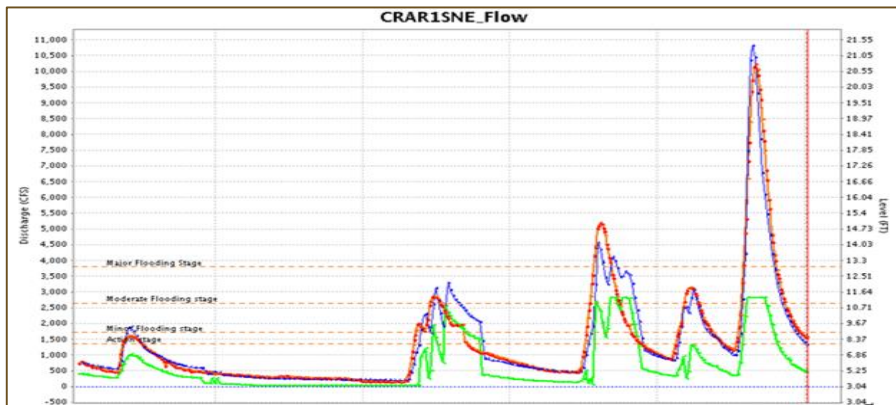
Westport firefighters rescued two adults and two children from vehicles that were swept off the road by floodwaters. Crews had to break a window to extricate one victim, but no injuries were reported.  
Photo credit: Town of Westport Fire Department



# Exhibit C: March 2010

## Back-to-back-to-back heavy rains

- Active weather pattern
  - 4 major rain events in 5 weeks
  - 20 inches of rain in 30 days
  - 3 of the events in 2.5 weeks
- The result: Record Flooding



**NATIONAL WEATHER SERVICE**

Protecting Lives and Property for 150 Years

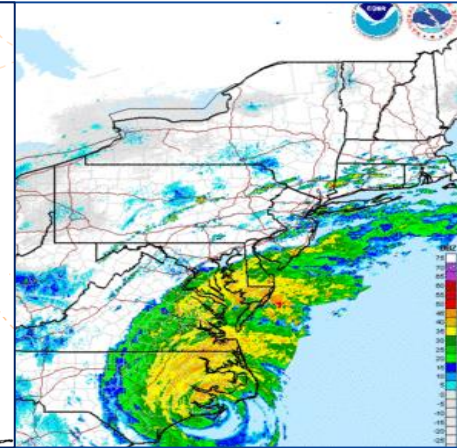
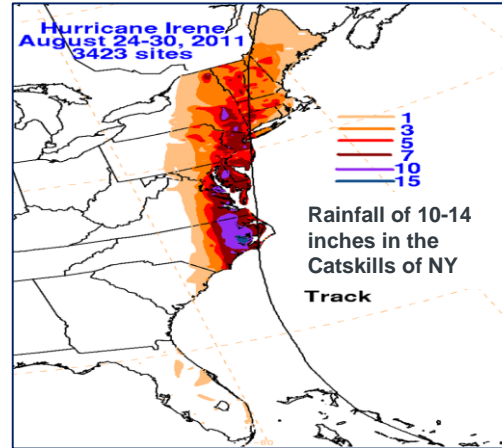
<http://weather.gov/nerfc>

Building a Weather-Ready Nation // 9

# Exhibit D: Tropical Storm Irene

## Heavy rainfall west of track

- Classic New England Tropical Cyclone
  - Wind/surge to the east & torrential rains to the west
- Slower moving and feeding off a rich tropical air mass
- Preceded by a wet spring and summer
- The result: Catastrophic Flooding from 10-14 inches of rainfall in a 9-15 hour period!



Record Flooding – Buckland, MA



Catastrophic Flooding - Prattsville, NY



NATIONAL WEATHER SERVICE

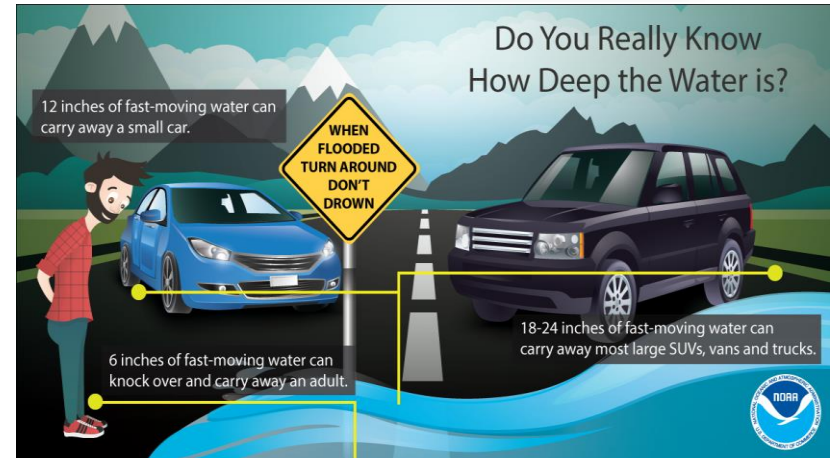
Protecting Lives and Property for 150 Years

<http://weather.gov/nerfc>

Building a Weather-Ready Nation // 10

# Summary

- Floods can occur at any point in the year
  - They come in a variety of shapes and sizes
- The alignment of key atmospheric and hydrologic ingredients can lead to widespread major flooding
- Topography can influence severity
- Impacts are compounded by land use changes combined with our changing climate



NATIONAL WEATHER SERVICE

Protecting Lives and Property for 150 Years

<http://weather.gov/nerfc>

Building a Weather-Ready Nation // 11





# NATIONAL WEATHER SERVICE

*Protecting Lives and Property for 150 Years*



## What Makes A Big Flood In the Northeast?

*It's not just about heavy rainfall...*

### QUESTIONS?

David R. Vallee

Hydrologist-in-Charge

NOAA/NWS Northeast River Forecast Center

[weather.gov/nerfc](http://weather.gov/nerfc)



Record flooding on Pawtuxet River, West Warwick, RI  
- March 31<sup>st</sup>, 2010. Source: D. Vallee/NWS



Record flooding in Dolgeville, NY on West Canada  
Creek, November 1<sup>st</sup>, 2019. Source: D. McGee



Flash Flooding on the Long Island Expressway from 11  
inches of rain in ~ 3 hours! August 13<sup>th</sup>, 2014.