



MS4 Regulations and Extreme Weather

Newton Tedder

EPA Region 1

Boston, MA

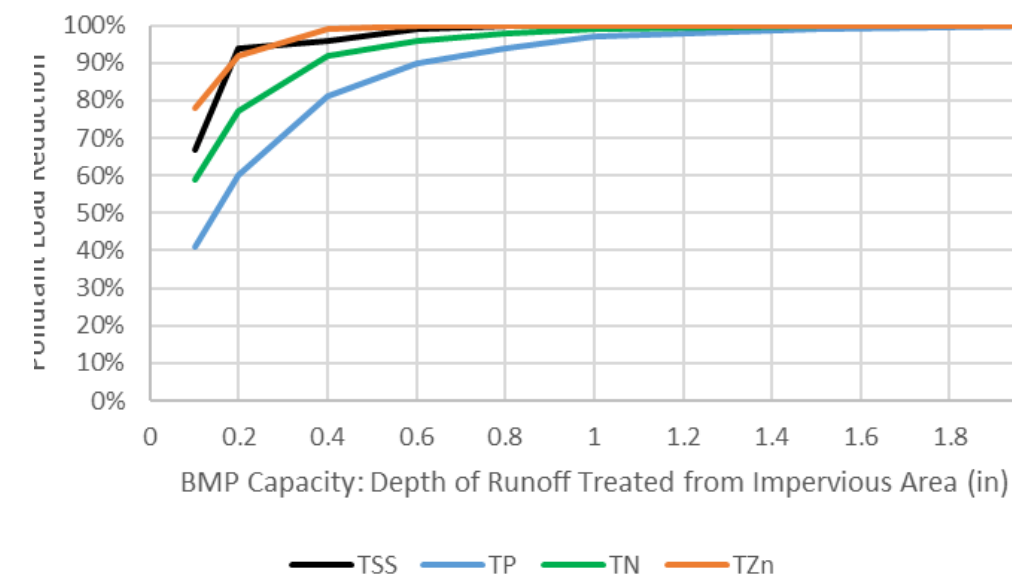
tedder.newton@epa.gov



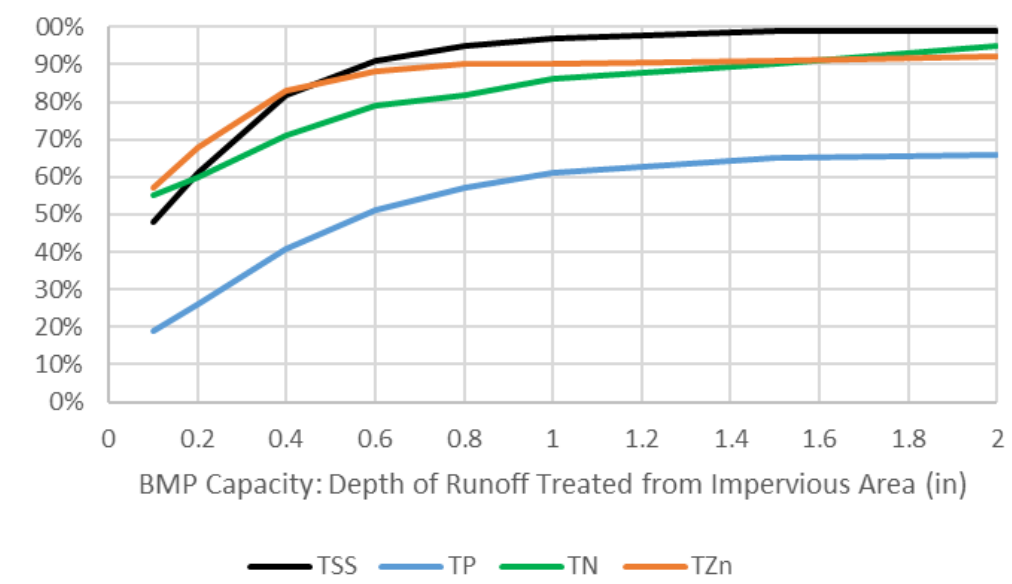
Pollutant Removal Info:

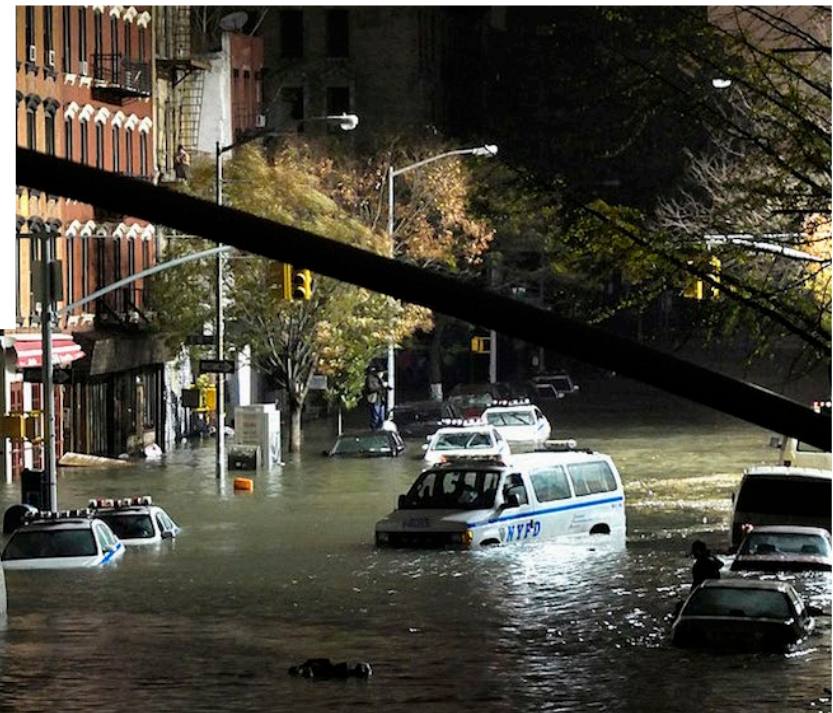
<https://www3.epa.gov/region1/npdes/stormwater/assets/pdfs/ms4-permit-nomographs.pdf>

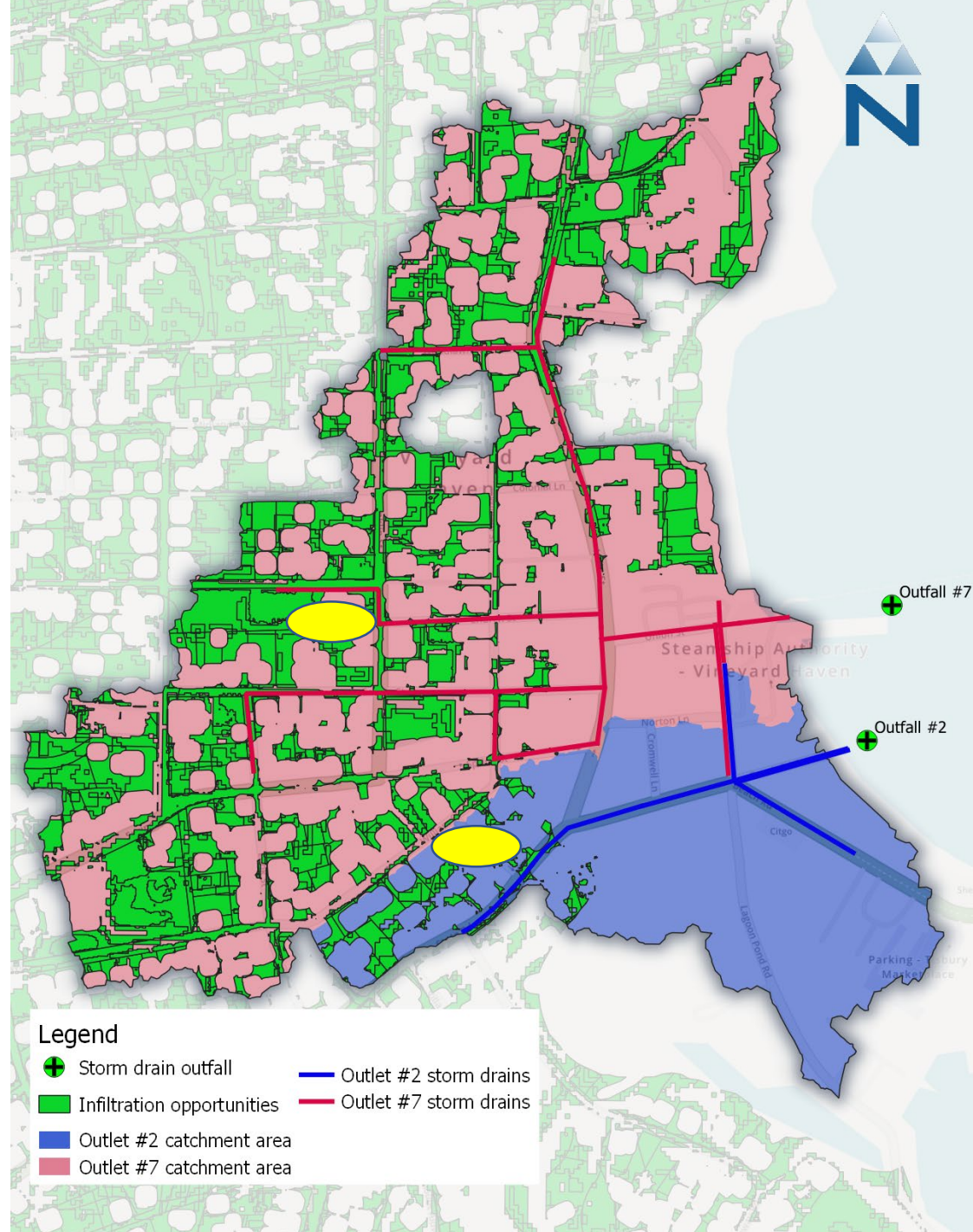
Biofiltration Performance



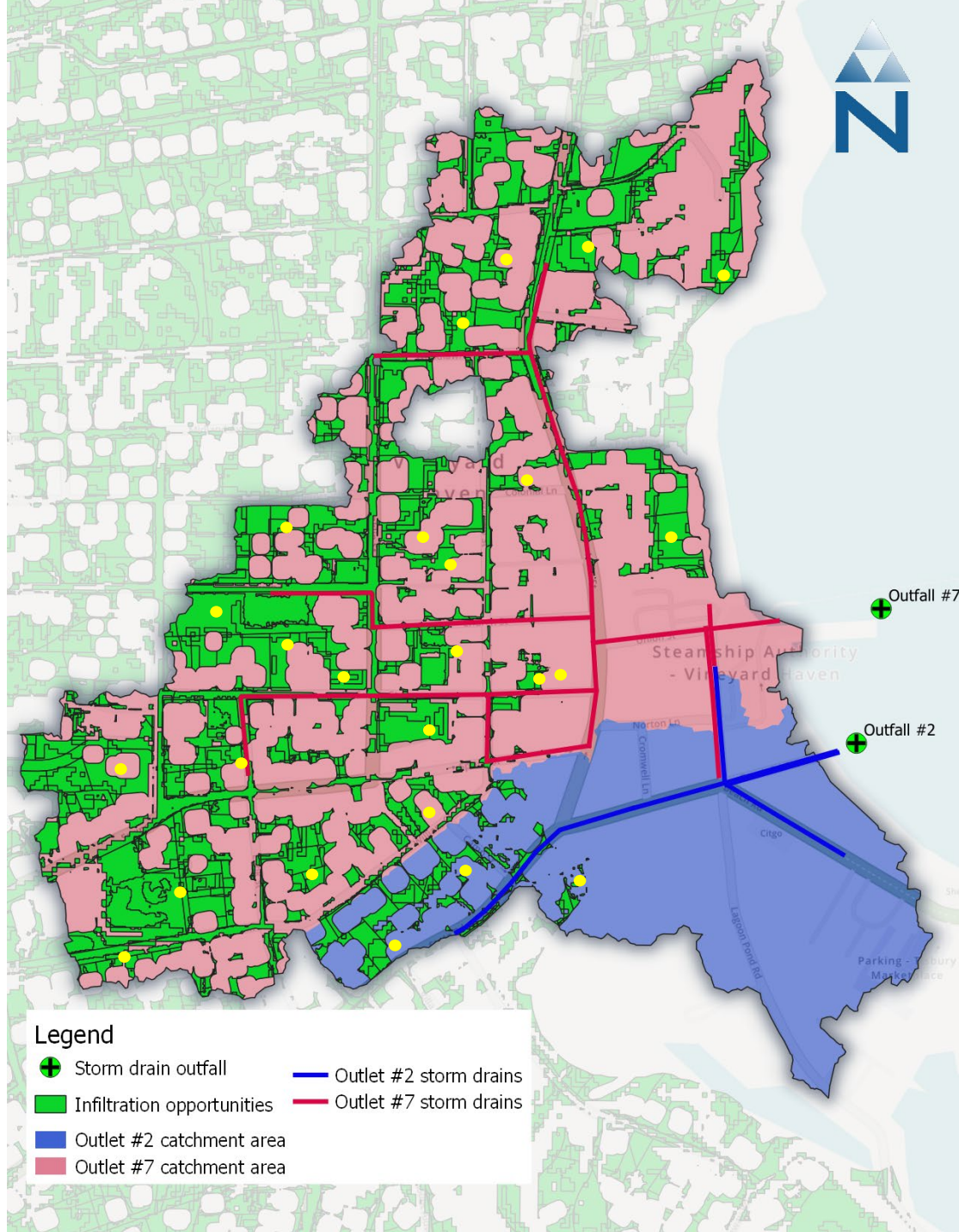
Subsurface Gravel Wetland Performance



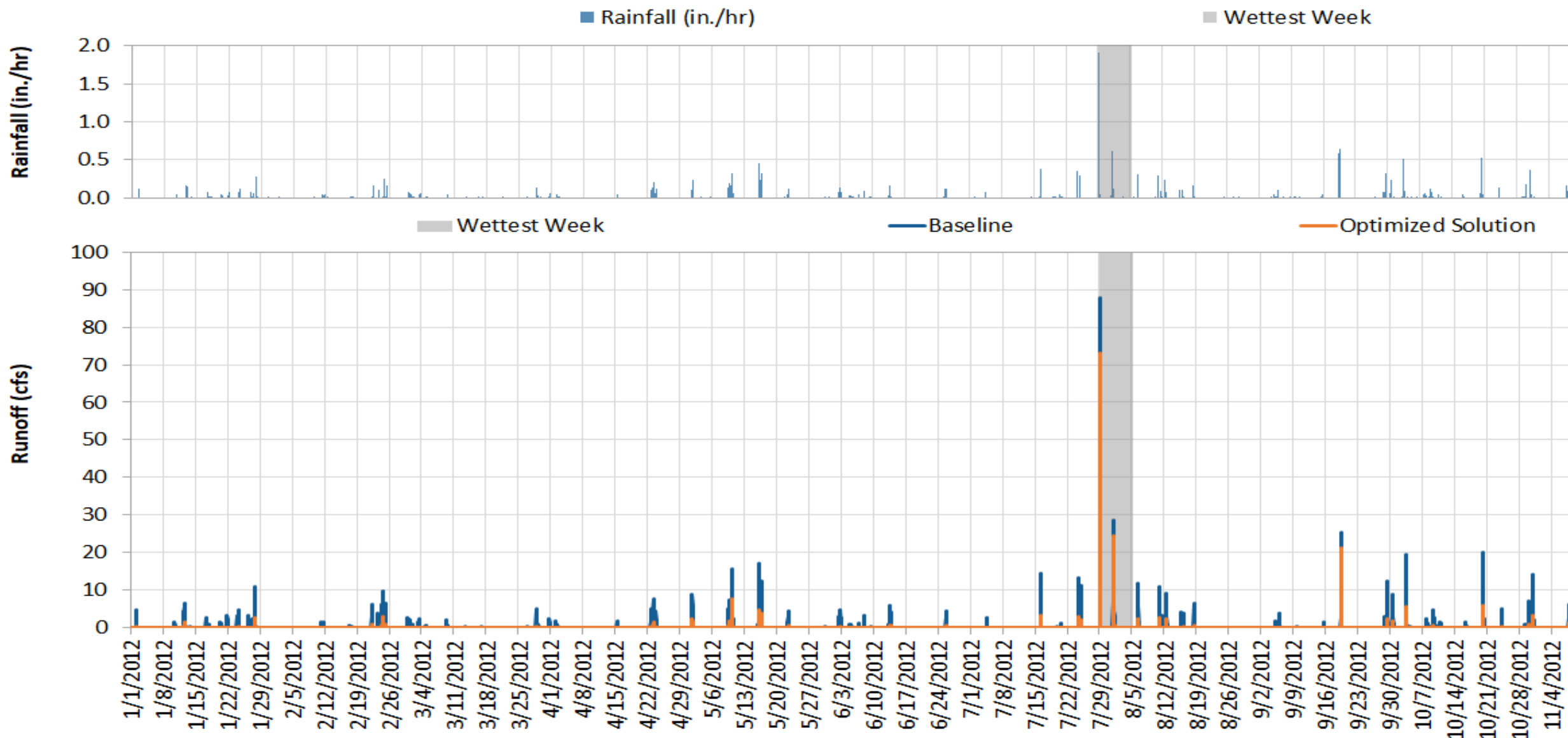




<https://www.epa.gov/snecwrp/tisbury-ma-impervious-cover-disconnection-icd-project-integrated-stormwater-management>



- Legend**
- Storm drain outfall
 - Infiltration opportunities
 - Outlet #2 catchment area
 - Outlet #7 catchment area
 - Outlet #2 storm drains
 - Outlet #7 storm drains





[EPA Pollution Removal Tools:](https://www.epa.gov/npdes-permits/stormwater-tools-new-england#swbmp)
<https://www.epa.gov/npdes-permits/stormwater-tools-new-england#swbmp>

