

National Weather Service Flood Inundation Mapping (FIM)

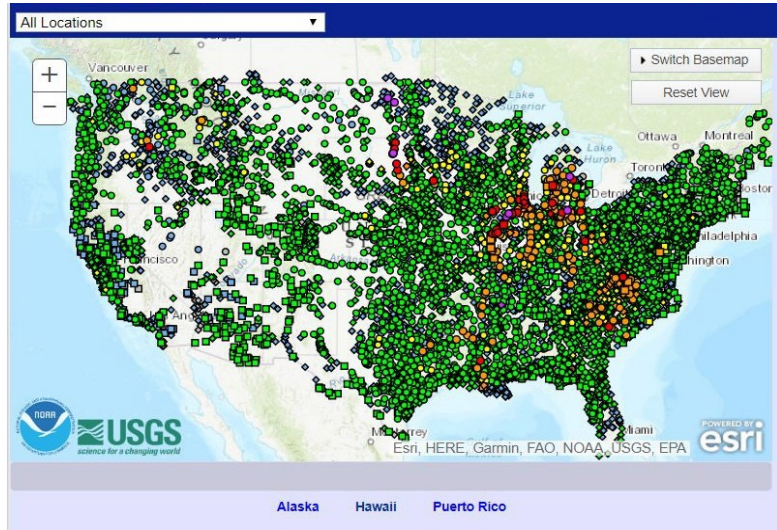
John Kirk

NOAA / NWS Middle Atlantic River Forecast Center



NOAA / NATIONAL WEATHER SERVICE
MIDDLE ATLANTIC RIVER FORECAST CENTER

Current Services



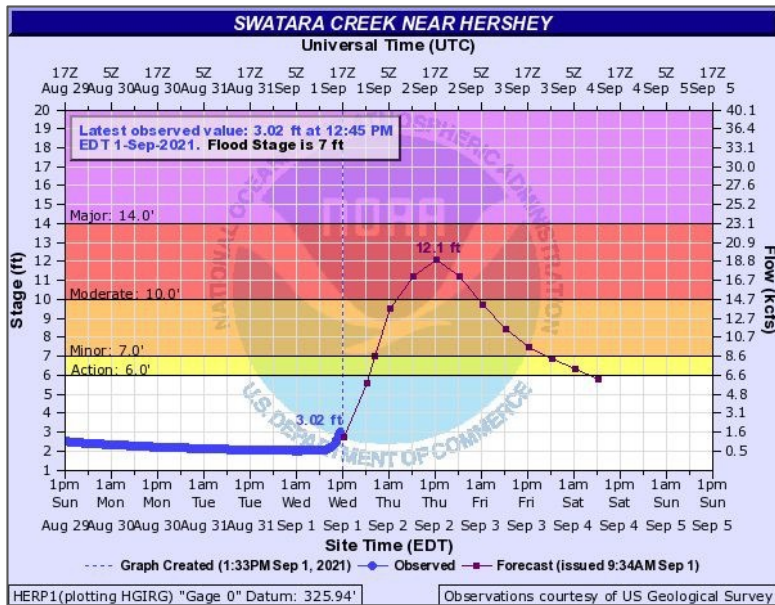
NWPS/AHPS Gages & Forecasts



National Water Model (NWM)

- NWS offers a variety of hydrologic services, including river forecasts
 - **NWPS:** ~3600 official river forecast locations available via National Water Prediction Service (successor to AHPS)
 - **NWM:** Modeled streamflow for 3,400,000 river miles via the National Water Model
- Opportunities to improve river forecast and flood impact communication to public and partners

Current Services



“a picture is worth a thousand words”

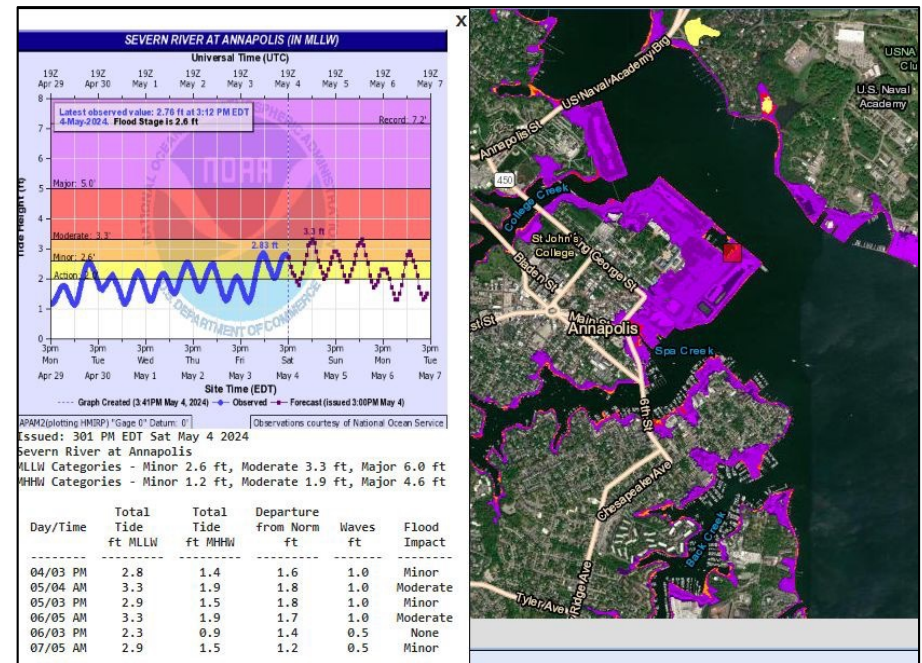
Some Existing NOAA/NWS Flood Map Resources

“Partner FIM”
(available at select locations on NWPS)



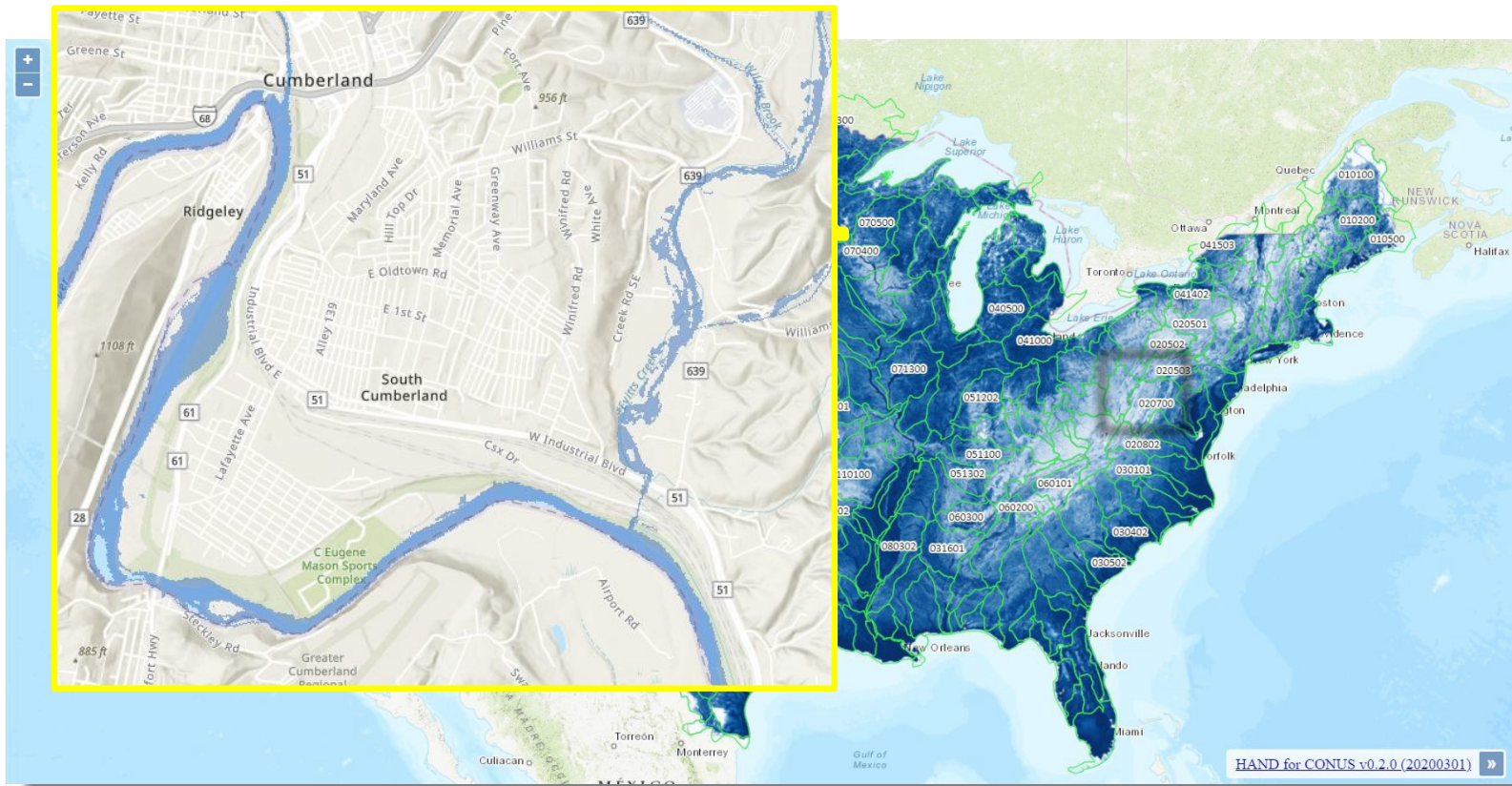
<https://water.noaa.gov/about/partner-fim-locations>

Coastal FIM

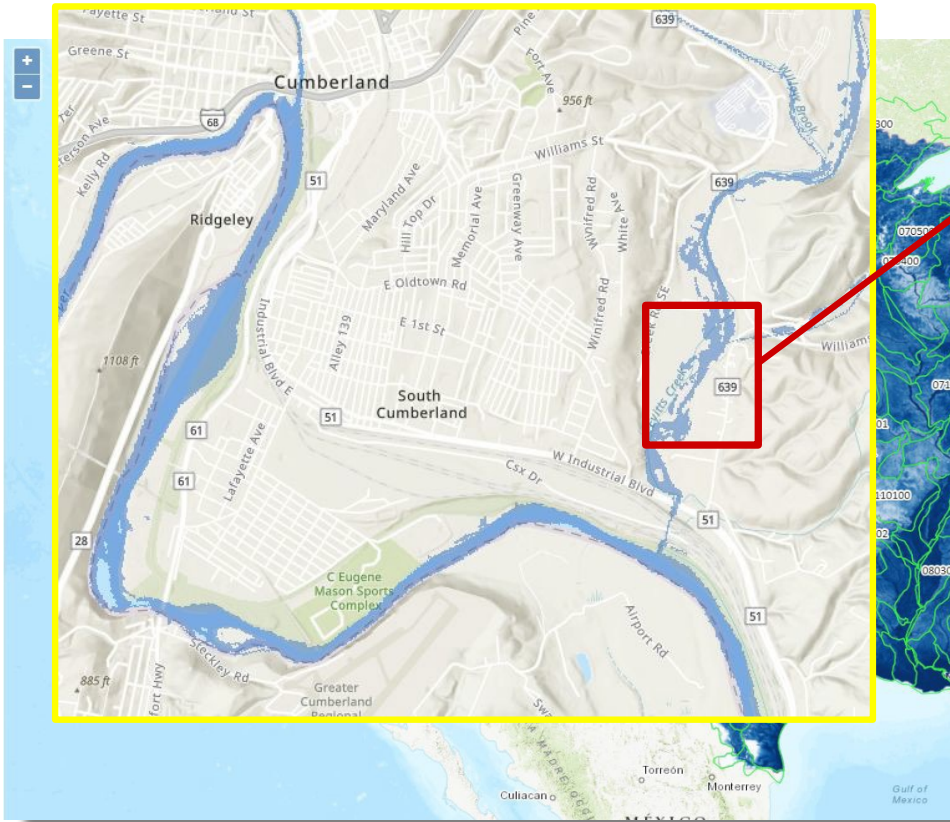


<https://www.weather.gov/erh/coastalflood>

New NWS Flood Inundation Mapping (“FIM”)



New NWS Flood Inundation Map



“New” NWS FIM Types

- Each of the new NWS FIM types uses the **Height Above Nearest Drainage (HAND) method** to depict river flood inundation (flood extent only, for now)
 - Based on **live forecast and observed data**
 - Only available when **flood conditions are possible or are occurring**.



RFC FIM
(River Forecast Center)



NWM FIM
(National Water Model)

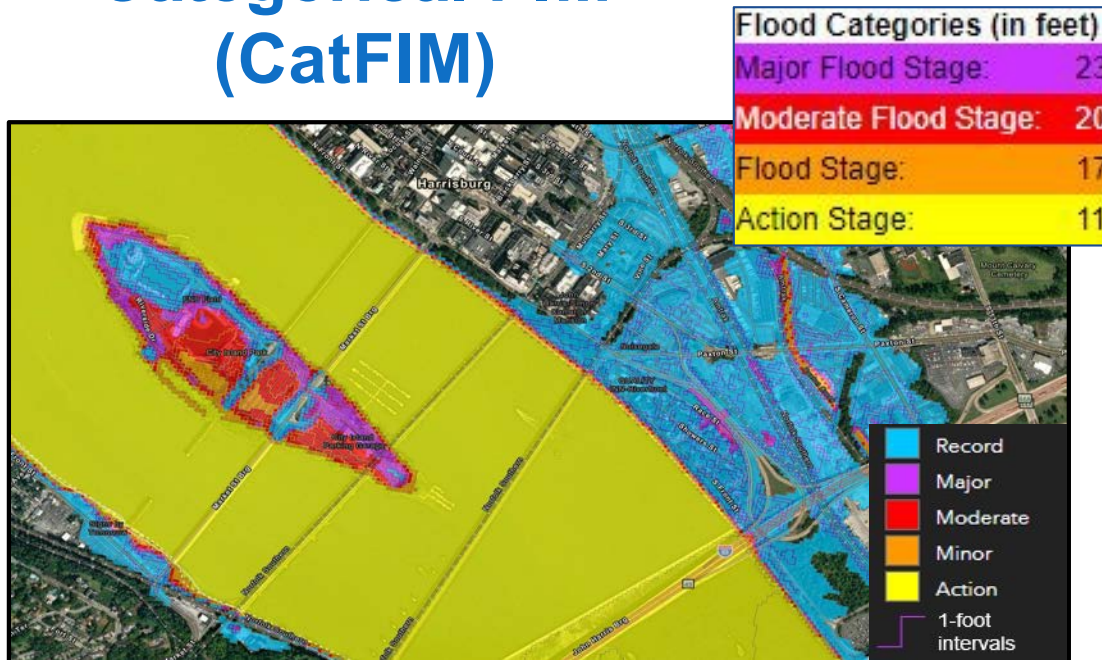


NWM
Latest Analysis FIM
(aka “AnA = Analysis and Assimilation”)

For more info: [NWS FIM Fact Sheet](#)

“New” NWS FIM Types

Categorical FIM (CatFIM)



CatFIM Locations:

<https://water.noaa.gov/about/cat-fim-locations>

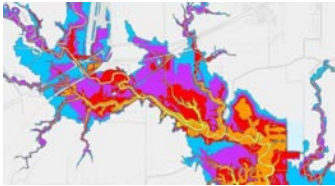
- **FIM extent** for each NWS **flood category** at streamgages
 - Minor Flood, Moderate, Major, etc.
- Also includes flood extents at **1-ft intervals** from Action Stage to 5 ft above Major Flood
- Static/Reference map used for **planning** and **“what-if” scenarios**; **not based on a current forecast**

NWS Flood Inundation Map (FIM) Types and Capabilities

Static Maps



Partner FIM (aka AHPS FIM) - High-resolution static maps. Shows both extent and depth of possible flooding at various crest heights. Only covers < 1,000 miles of rivers.



NWS Categorical FIM (CatFIM) - Static maps that cover ~30,000 miles of rivers. Shows likely spatial extent of flooding at various flood stage categories (“Major,” “Moderate,” “Minor,” etc.).

Storm-Specific Forecast Maps



River Forecast Center FIM (RFC FIM) - Storm-specific forecast maps showing possible flood extent over the next 3-5 days based on the RFC forecast for the upstream gauge. Will cover ~110,000 river miles once fully implemented nationwide.



National Water Model FIM (NWM FIM) - Storm-specific forecast maps showing possible flood extent for all rivers and streams over the next 5 days based on NWM model guidance and antecedent conditions. Will cover ~3.4 million river miles once fully implemented nationwide.



National Water Model Latest Analysis FIM (AnA FIM) - NWM approximation of current flood extent based on latest rainfall observations and streamflow data. Will update every 1.5 hours. Will cover ~3.4 million river miles once fully implemented nationwide.

NWS FIM Use Before, During, and After a Flood Event

Forecasts & Data:

- Probabilistic forecasts
- River ensembles (MMEFS & HEFS)
- NWS River Forecasts
- NWM Guidance
- Current Conditions (Gage Observations)
- NWS River Forecasts
- High Water Marks
- Flood Photos/Videos
- Damage Assessments

**Day 4-7+
Pre-Flood**
or "Blue Sky" Planning

Flood Inundation Maps (FIM):

- Partner FIM
- CatFIM
- NWM FIM

**Days 1-3
Pre-Flood**

- Partner FIM
- CatFIM
- RFC FIM
- NWM FIM

Flood

- Partner FIM
- CatFIM
- RFC FIM
- NWM FIM
- Latest Analysis FIM

Post-Flood

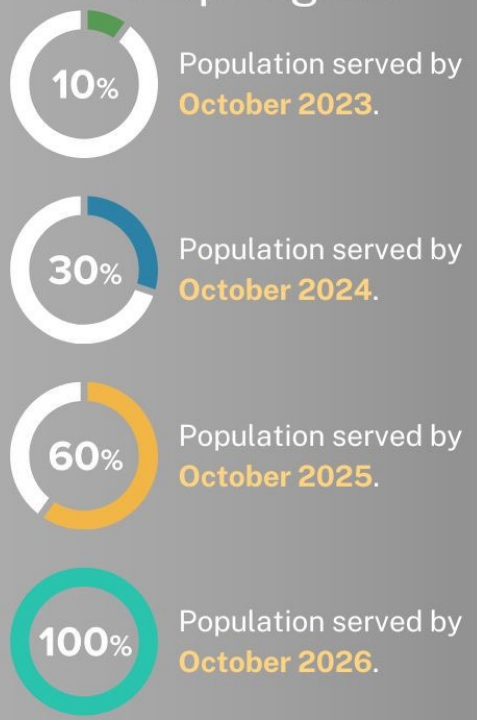
- Partner FIM
- CatFIM
- Latest Analysis FIM





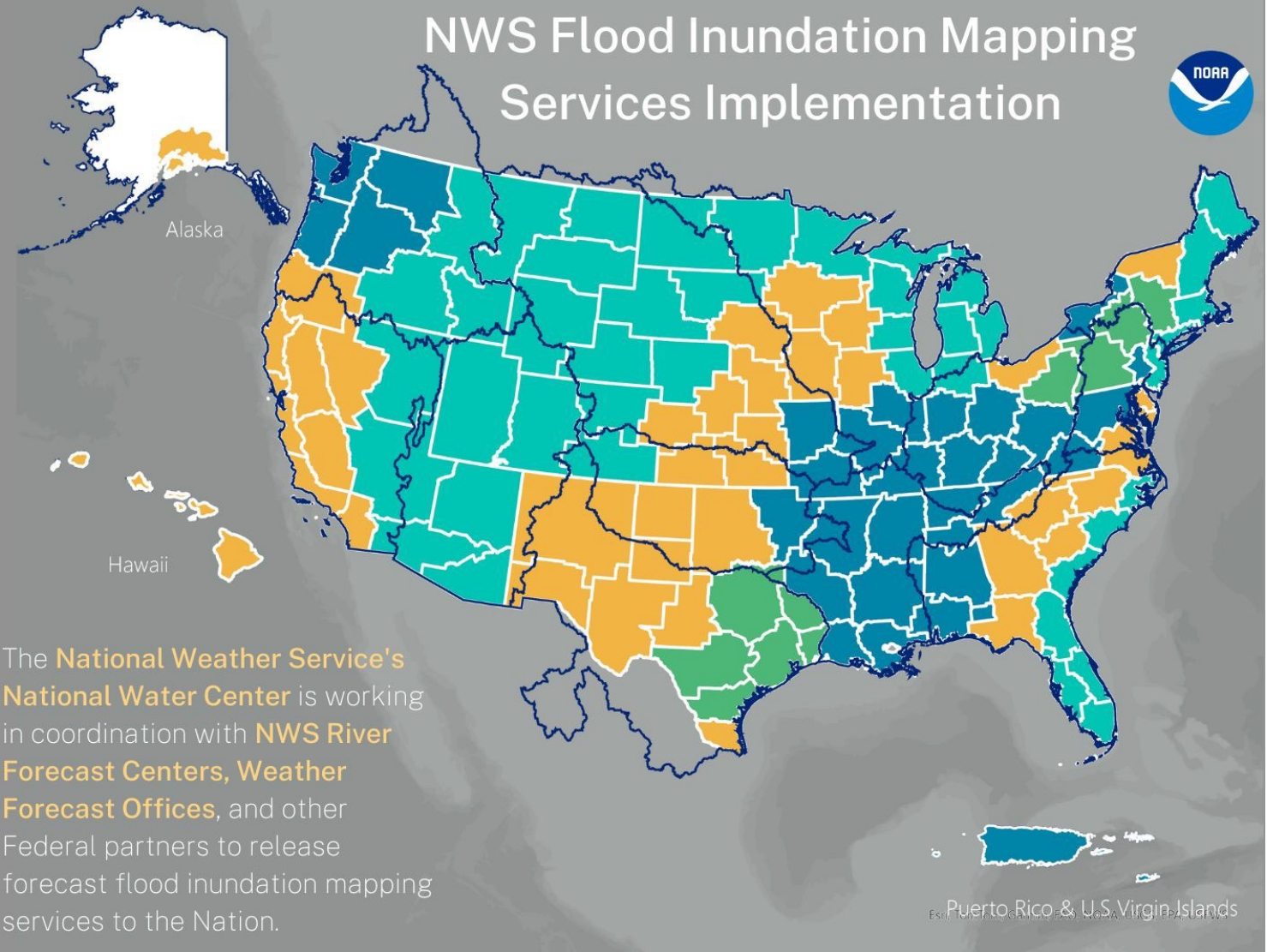
NWS Flood Inundation Mapping Services Implementation

Map Legend



- NWS County Warning Areas
- NWS River Forecast Center Boundaries

*100% is approximate. Does not include all parts of Alaska, American Samoa, and Guam. Implementation areas are subject to change.



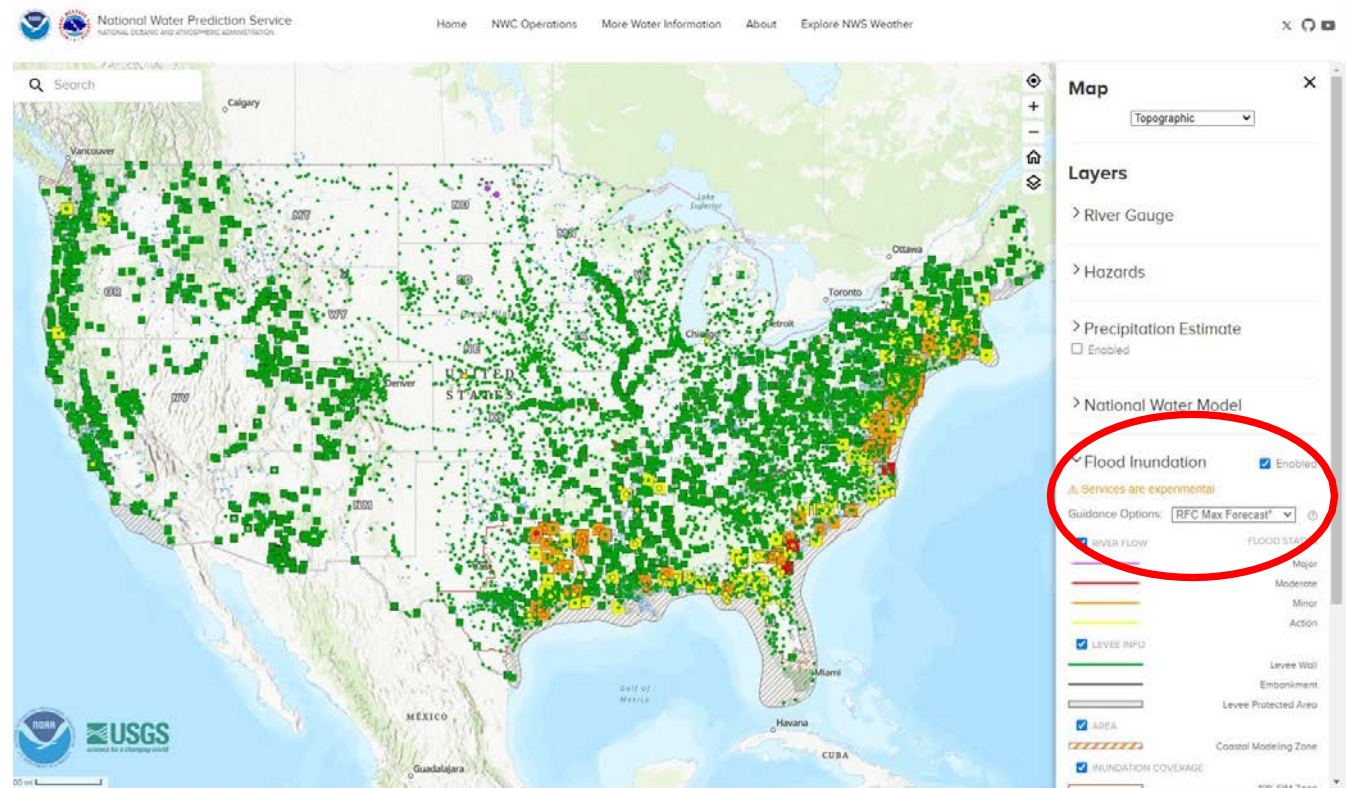
The **National Weather Service's National Water Center** is working in coordination with **NWS River Forecast Centers, Weather Forecast Offices**, and other Federal partners to release forecast flood inundation mapping services to the Nation.

Where Can I Access NWS FIM?

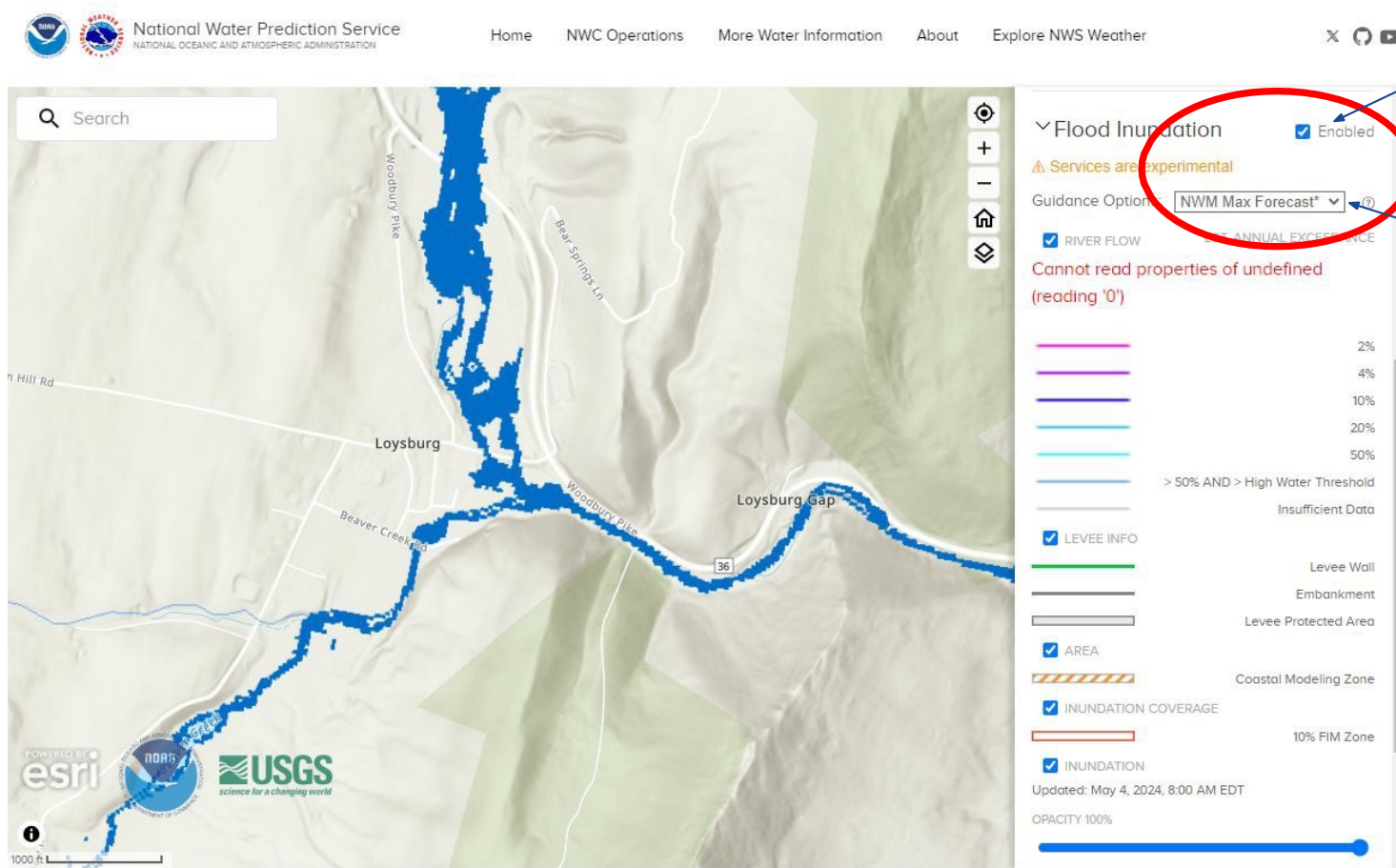
National Water Prediction Service (NWPS)

➤ water.noaa.gov

- **Forecast FIM**
 - Accessible from NWPS main page (Flood Inundation dropdown)
- **Static FIM**
 - Accessible from a gage page



Example of Forecast FIM on NWPS: water.noaa.gov



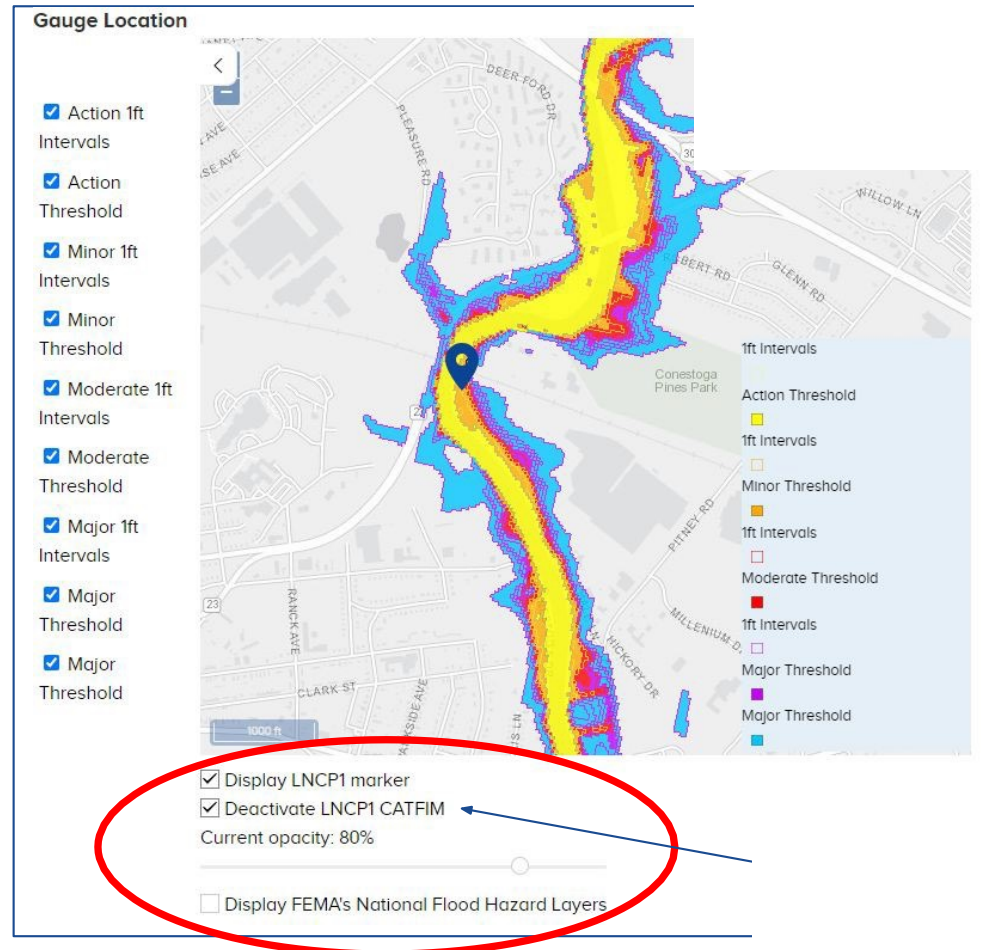
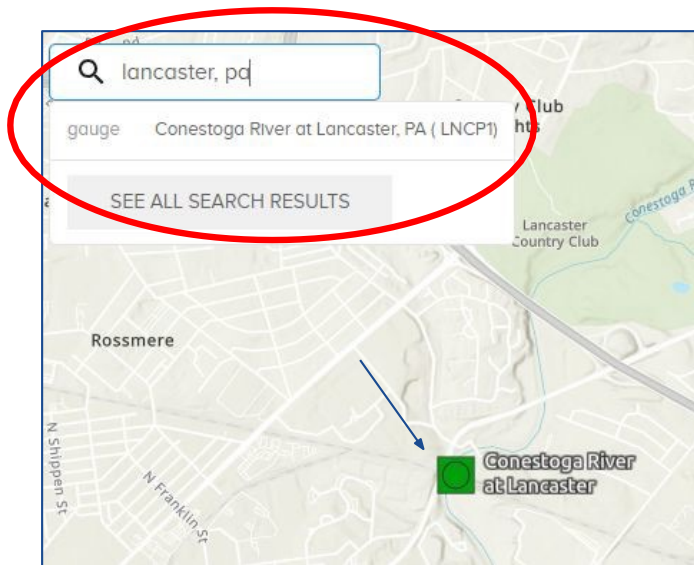
1. Click "Enable"

2. Choose a Forecast FIM type

3. Zoom into the map to see where FIM is available

Example of Static FIM on NWPS: water.noaa.gov

1. On [NWPS main page](#), search or click on a streamgage to view the “gage page”



Import NWS FIM into Your GIS Dashboards & Environments

<https://maps.water.noaa.gov/server/rest/services>

ArcGIS REST Services Directory [Login](#)

[Home](#) > [services](#) [Help](#) | [API Reference](#)

[JSON](#) | [SOAP](#)

Folder: /

Current Version: 10.81

View Footprints In: [ArcGIS Online Map Viewer](#)

Folders:

- [fim_libs](#)
- [nwm](#)
- [owp](#)
- [para](#)
- [reference](#)
- [rfc](#)
- [Utilities](#)

Services:

None

Supported Interfaces: [REST](#) [SOAP](#) [Sitemap](#) [Geo Sitemap](#)





Questions / Comments?

John Kirk

Senior Hydrologist, NWS MARFC

johnathan.kirk@noaa.gov